

# 2004 Fire in Washington

Prepared by the Office of the State Fire Marshal





## *Table of Contents*

Letter from the Chief of the Washington State Patrol.....	2
Letter from the State Fire Marshal.....	3
Letter from the President of the Washington State Association of Fire Chiefs	4
Preface.....	5
Washington State Fire Clock.....	6
Participation.....	7
Incident Overview.....	8
Incident Comparison by Year.....	9
Fire Incidents.....	10
Fire Incidents by Property Use.....	11
Area of Origin.....	12
Heat Sources.....	13
Residential Properties.....	14
Intentionally Set Fires.....	15
Incidents Based on Population.....	16
Fire Fatalities.....	17
Causes of Fire Fatalities.....	18
Where Fire Fatalities Occur.....	19
Fire Fatalities and Fire Protection Devices.....	20
Fire Deaths by County.....	
Regional Reports	
Region 1.....	22
Region 2.....	25
Region 3.....	28
Region 4.....	31
Region 5.....	35
Region 6.....	38
Region 7.....	42
Region 8.....	45
Region 9.....	49
Risk Watch in Washington.....	53
Fireworks.....	55
Firesetting Intervention.....	60
Special Recognition.....	61



STATE OF WASHINGTON

WASHINGTON STATE PATROL

General Administration Building, PO Box 42600 - Olympia, Washington 98504-2600 — (360) 753-6540

July 1, 2005

Dear Fire Service Partners and Advocates:

I want to thank each of the 401 fire agencies that submitted emergency response data for the 2004 *Fire in Washington Report*. Your tireless efforts and commitment to the National Fire Incident Reporting System are reflected in the success of this program and have been instrumental in:

- The development and implementation of public education programs aimed at decreasing the loss of life and property from fire, such as the Juvenile Firesetter Intervention Program and RiskWatch, an all-injury prevention program;
- Supporting legislative changes aimed at providing the highest level of fire safety in Washington, such as the new law requiring fire sprinkler systems in nightclubs, and allowing for the development of a proactive education and assistance program for facilities that have recalled sprinkler components that are subject to replacement;
- Developing training programs based on what the true fire problem is, and identifying ways to ensure our state's fire service has a highly trained and professional workforce.

I also want to thank the Washington State Association of Fire Chiefs for supporting the continued growth of the National Fire Incident Reporting System and for the leadership they have demonstrated towards excellence in public safety.

Sincerely,

  
CHIEF JOHN R. BATISTE





STATE OF WASHINGTON

WASHINGTON STATE PATROL

General Administration Building, PO Box 42600 - Olympia, Washington 98504-2600 — (360) 753-6540

July 1, 2005

Dear Partners in Fire Safety:

Since being appointed as Washington State Fire Marshal, I have had the opportunity to visit many fire agencies in this beautiful state. I am pleased to see the progress being made toward documenting fire-related incidents in accordance with the National Fire Incident Reporting System (NFIRS) standard.

I recognize and commend the time and effort it takes to enter incident information into NFIRS compliant software, and then forward the data on to the state. As the volume of information grows, decision makers at the local, state, and federal levels are better equipped to evaluate the issues facing the fire service. The commitment demonstrated toward data collection will pay off when tough questions are asked and we are able to provide answers based on the facts found in NFIRS. I encourage all fire agencies to submit their NFIRS data on a monthly basis so the most current information is available when requested.

The Washington State fire service can be proud of the progress they made since the implementation of NFIRS 5.0 in 1999. The “2004 Fire in Washington” report includes incident activity submitted by 401 of the 528 fire agencies. Over 447,000 incidents were reported, of which 25,421 were fires that resulted in more than \$133 million in dollar loss. Tragically, 55 people in our state lost their lives due to fire last year. We must continue to work together to educate the public about the risky behaviors that cause deadly fires. Collectively, we **can** make a difference to save lives.

Sincerely,

CHIEF JOHN R. BATISTE

Samuel Pierre  
State Fire Marshal





**Washington State Association of Fire Chiefs**

P O Box 7964 Olympia, WA 98507-7964 (360) 352-0161 Fax: (360) 586-5868 Email: [wsafc@wsafc.org](mailto:wsafc@wsafc.org)

July 1, 2005

To Fire Service Leaders of Washington State:

The Washington State Association of Fire Chiefs recognizes and applauds the continuing efforts of each member of the fire service for your commitment to accurate data collection and timely reporting in Washington State. As your participation in the National Fire Incident Reporting System continues to increase, fire service leaders at the national level are recognizing the importance of quality data.

Strategic decisions are increasingly critical for quality public safety services, especially in the context of current significant fiscal pressures. Through your efforts and this system, informed decisions, which are based on reliable statistical information, are becoming a reality for all of us.

The Washington State Association of Fire Chiefs, in partnership with the Office of the State Fire Marshal, will continue to support the statewide collection and reporting of emergency incident data in order to more clearly articulate the challenges we face in serving the people of Washington State.

Sincerely,

Chief Dan Packer, <sup>D.P.</sup> President  
Washington State Association of Fire Chiefs



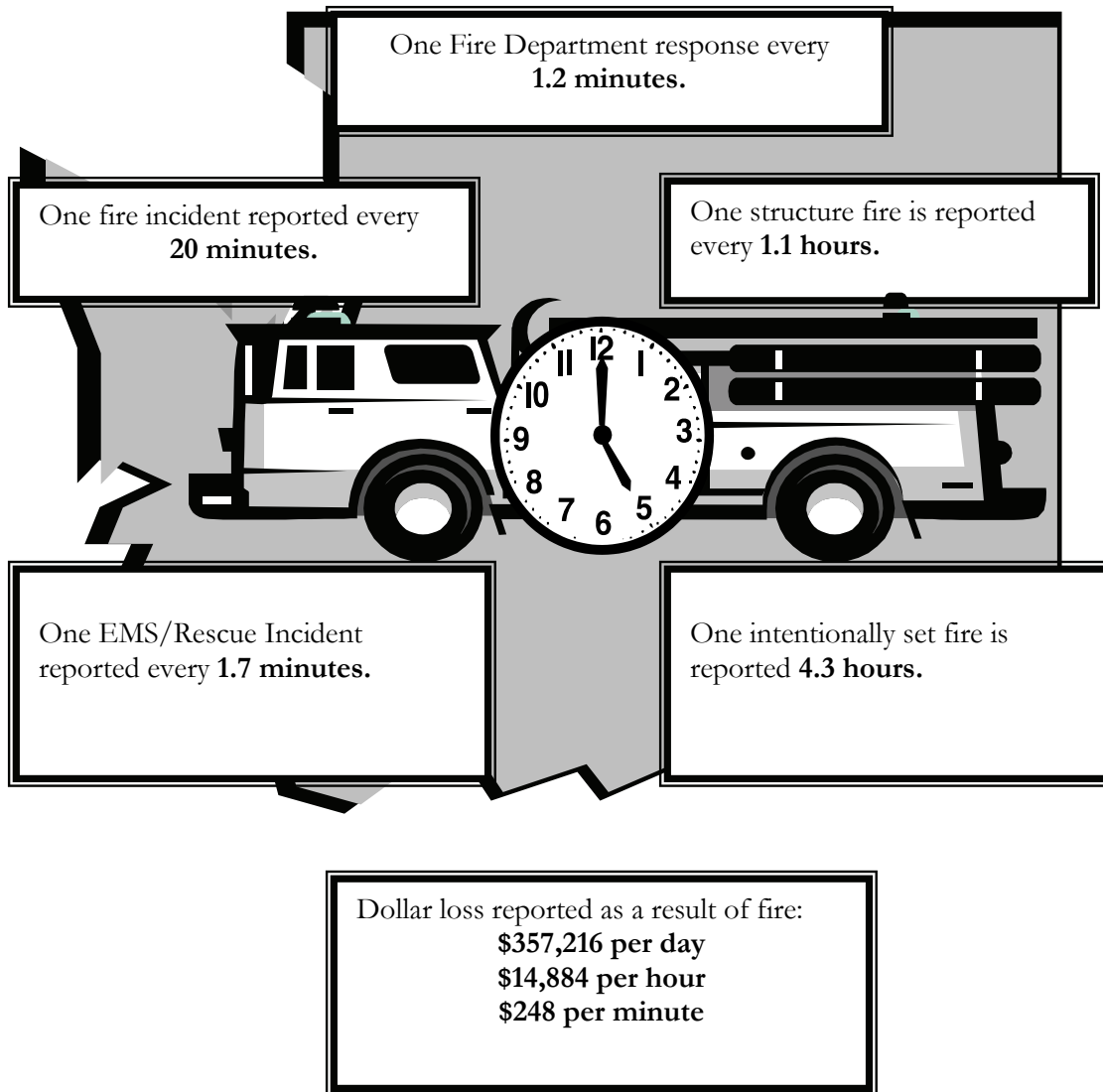
## Preface

RCW 48.48.065 requires fire incidents to be reported to the Office of the State Fire Marshal in accordance with the National Fire Incident Reporting System (NFIRS). NFIRS Version 5.0 (NFIRS 5.0) is an all-incident reporting system that can capture the full range of incident activity. In 2004, 401 out of 528 (76%) fire agencies reported incident data. Many agencies document all incidents, while some agencies only report fires as stated in the statute.

This report provides an overview of all incident categories reported in 2004, with fires as the primary focus. The statistical reports are generated from the United States Fire Administration website. The figures come from NFIRS 5.0 data reported from Washington State. Figures presented may vary slightly based on the day the summary report is generated.

## Washington State Fire Clock

Frequency of Responses as Reported in 2004  
Based on NFIRS data only.

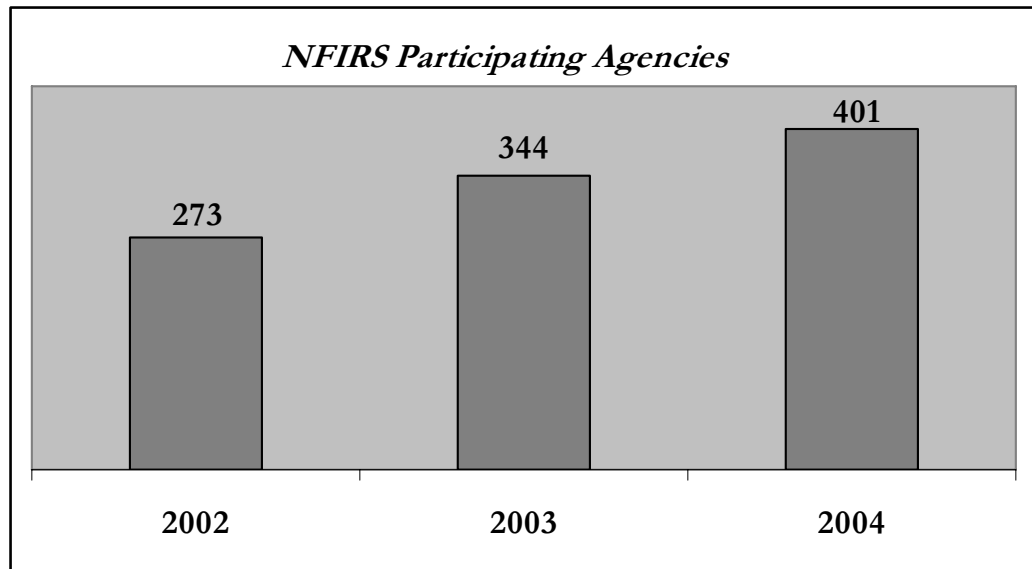




## Participation

RCW 48.48.065 states that fire agencies are required to submit fire incidents to the Office of the State Fire Marshal in accordance with the National Fire Incident Reporting System. NFIRS 5.0 is an all-incident reporting system that enables all fire agencies to document any incident electronically in a uniform format. The Office of the State Fire Marshal maintains the statewide NFIRS database, which is capable of accepting any incident documented in accordance with the 5.0 format. In Washington, some agencies report only fires, while the majority of the agencies are reporting all incident activity.

The number of agencies participating in NFIRS 5.0 has been steadily increasing. The chart below illustrates the number of agencies that have reported over the last three years. In 2004, 401 of the 528 fire agencies (76%) submitted incident information for inclusion in this annual report representing an increase of 17% over the previous year.



The Office of the State Fire Marshal will continue to work closely with the Fire Service to encourage all agencies to participate. In addition, fire agencies are encouraged to submit data on a monthly basis. As NFIRS is quickly becoming recognized as a source of valuable information, it is necessary to gain access to current statewide NFIRS data. Requests for information are regularly received from the public, the media, and other state and federal agencies, as well as the legislature.

## Incident Overview

In 2004, Rescue and Emergency Medical Service incidents were the leading incident type category, representing 65% of the total incidents. The second leading incident type category was Good Intent Calls (6%). This category includes cancelled en route incidents and incidents that did not require fire service assistance.

Fire incidents accounted for 6% of the total incidents reported through NFIRS. These fires caused more than \$130 million in property and content loss and claimed the lives of 55 people in the state of Washington. Fire prevention must be practiced in places where people live, work, and play in order to reduce the occurrence of fire.

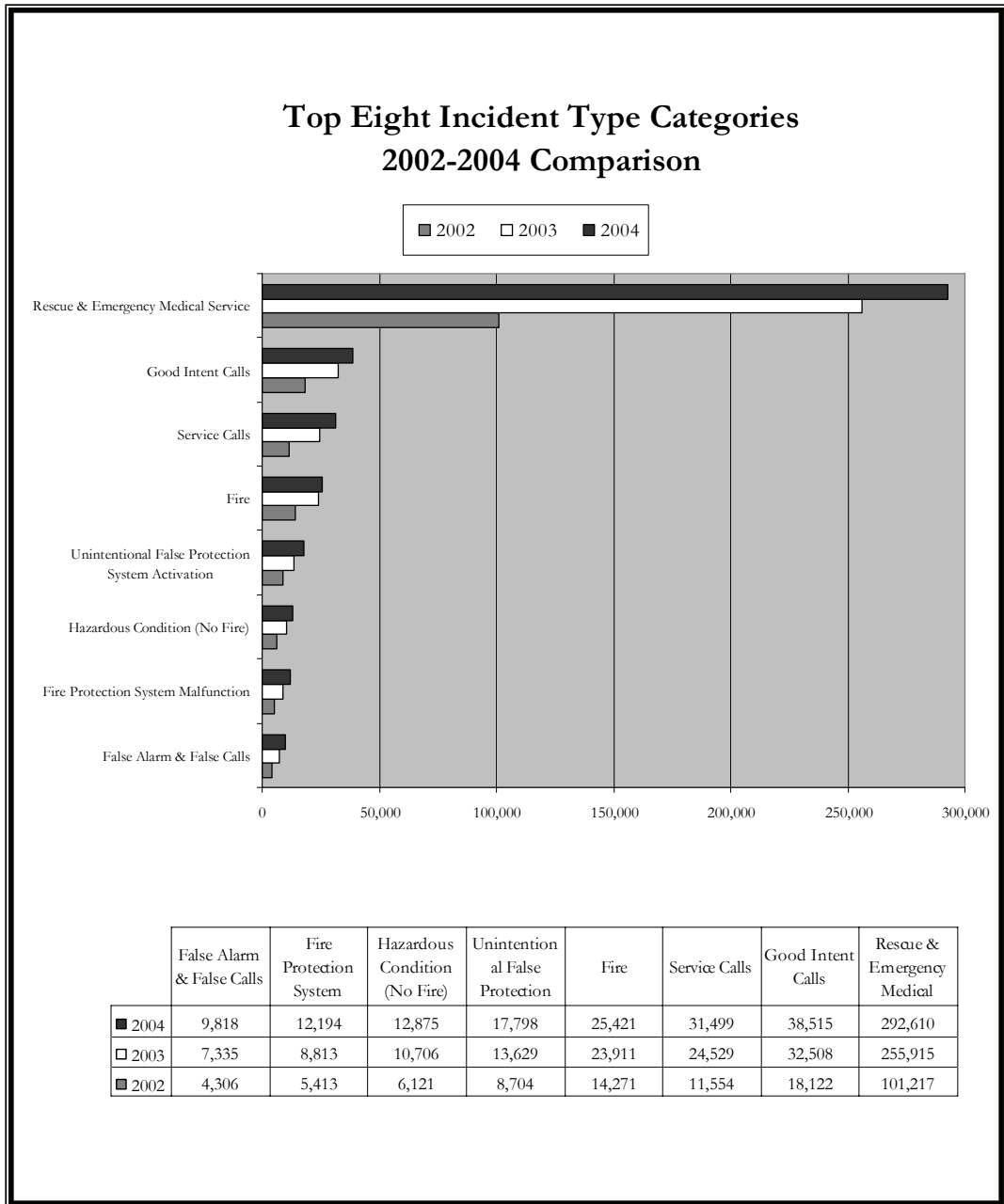
The chart below provides a breakdown of all the incident categories provided in NFIRS 5.0. It is important to note that the dollar loss reported to NFIRS is based on estimates calculated by fire service personnel. Fire agencies are encouraged to be as accurate as possible when documenting dollar loss. The figures are intended to provide insight into the financial impact fire has on our communities and is used as a tool to target the fire problem.

### Summary of Incident Categories

<i>Incident Category</i>	<i>Number of Incidents</i>	<i>% of Total Number of Incidents</i>	<i>Dollar Loss</i>	<i>% of Dollar Loss</i>
Fire	25,421	6%	\$130,383,934	97%
Overpressure, Rupture, Explosion, Overheat	1,209	0%	\$444,365	0%
Rescue & Emergency Medical Service	292,610	65%	\$652,600	0%
Hazardous Condition (No Fire)	12,875	3%	\$437,082	0%
Service Calls	31,499	7%	\$1,080,396	1%
Good Intent Calls	38,515	9%	\$113,450	0%
False Alarm & False Calls	9,818	2%	\$9,550	0%
Fire Protection System Malfunction	12,194	3%	\$68,140	0%
Unintentional False Protection System Activation	17,798	4%	\$148,675	0%
Severe Weather & Natural Disaster	428	0%	\$403,516	0%
Other Types of Incidents	4,777	1%	\$15,000	0%
Undetermined	290	0%	\$0	0%
<b><i>Total</i></b>	<b>447,434</b>	<b>100%</b>	<b>\$133,756,708</b>	<b>100%</b>

## Incident Comparison by Year

The number of incidents reported to NFIRS continues to increase. Below is a comparison of the top eight incident type categories by year (2002-2004). As of 2004, the Fire in Washington Annual Report is based on NFIRS 5.0 data only. Summary data collected in 2002 and 2003 from large jurisdictions such as Seattle, Tacoma, Vancouver and Spokane are not included in the graph below.



## Fire Incidents

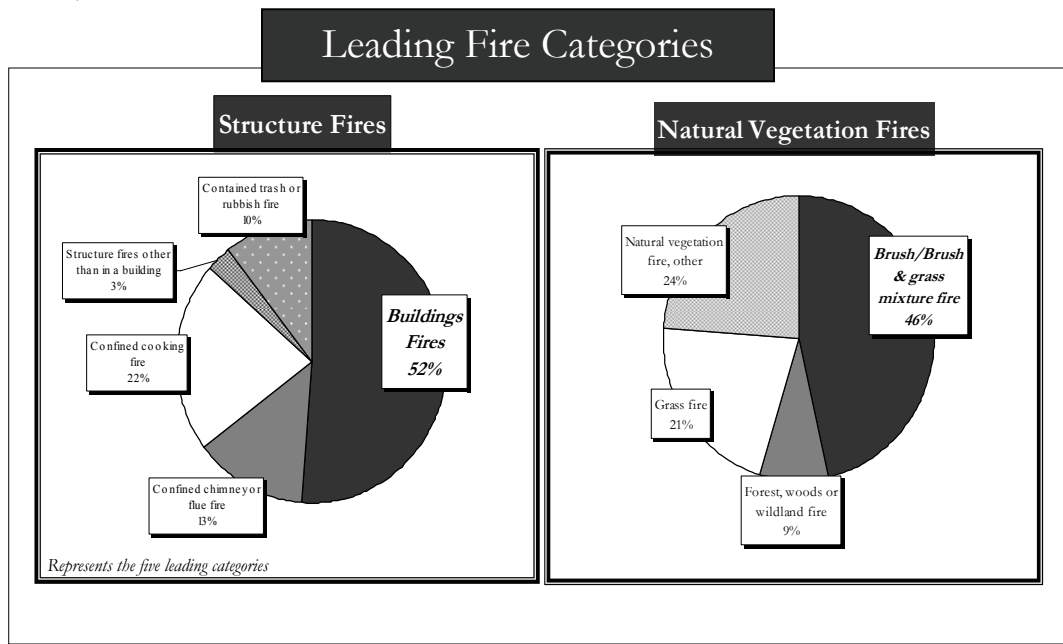
In 2004, fire incidents accounted for 6% of the total incidents and 97% of the total dollar loss reported. Fire agencies estimate that the 25,421 fires resulted in more than \$130 million in property and content loss during 2004.

Structures fires represented 31% of the total fires reported. The financial impact of structure fires in 2004 alone was estimated at more than \$114 million in property and content loss. Vehicle fires, the second leading fire category for dollar loss, resulted in more than \$10 million in loss. Natural vegetation fires, the second leading fire category, accounted for 24% of the total fires and more than \$1.6 million in loss.

The “fire other” category is being eliminated in 2005. This category allowed data collected under previous versions of NFIRS to be converted to the NFIRS 5.0 standard. In the past, this code has been available in NFIRS 5.0 software applications, and has been overused. Six percent of the fires reported in 2004 were coded as “fire other.” These incidents omit fields of information that provide insight into fire situations.

<i>Fires by Category</i>	<i>Number of Incidents</i>	<i>% of Incidents</i>	<i>Dollar Loss</i>	<i>% of Dollar Loss</i>
Structures (including confined fires)	7,761	31%	\$114,426,922	88%
Vehicle Fire	4,708	19%	\$10,652,385	8%
Fixed Mobile Property	324	1%	\$1,871,406	1%
Natural Vegetation	6,157	24%	\$1,654,727	1%
Fire Other	1,561	6%	\$925,615	1%
Cultivated Vegetation	148	1%	\$443,744	0%
Outside Storage & Equipment	1,229	5%	\$329,301	0%
Outside Rubbish	3,533	14%	\$79,834	0%
<b>Grand Total</b>	<b>25,421</b>	<b>100%</b>	<b>\$130,383,934</b>	<b>100%</b>

Sorted by Dollar Loss

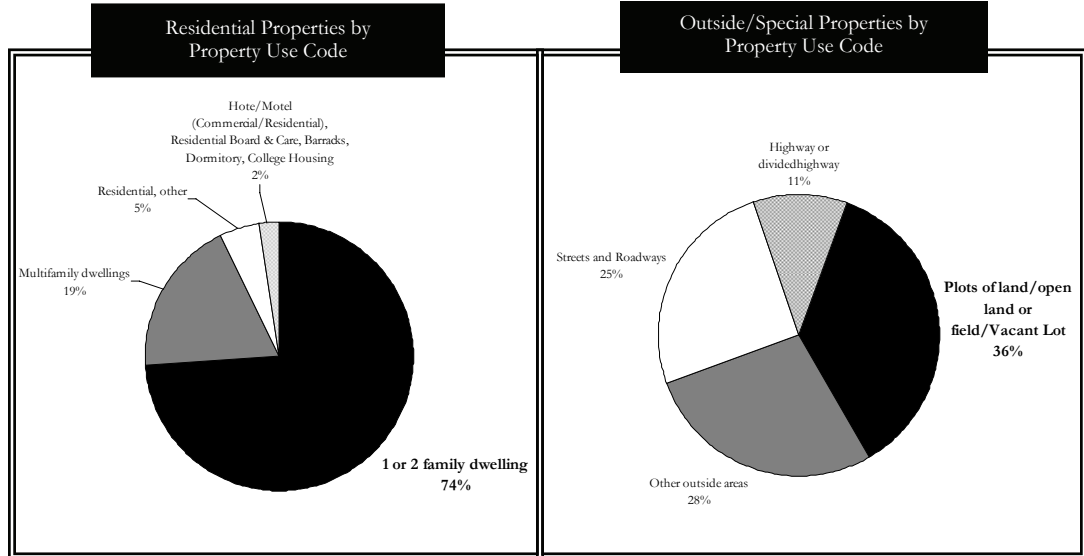


## Fire Incidents by Property Use

In 2004, “outside or special properties” was the most frequently reported category reported for fire incidents. Residential properties ranked second in number of incidents, but number one in dollar loss.

<i>Property Category</i>	<i>Number of Incidents</i>	<i>% of Total Incidents</i>	<i>Dollar Loss</i>	<i>% of Total Dollar Loss</i>
Residential	9,681	38%	\$79,533,501	61%
Manufacturing and Processing	239	1%	\$12,247,767	9%
Storage	628	2%	\$10,330,033	8%
Outside or Special Properties	10,543	42%	\$9,664,625	7%
Mercantile and Business	884	3%	\$8,107,737	6%
Assembly	521	2%	\$4,557,955	3%
Industrial, Utility, Defense, Agriculture, Mining	513	2%	\$2,682,641	2%
Other Property Use	640	3%	\$1,244,561	1%
Educational	413	2%	\$1,000,331	1%
Health Care, Detention, and Corrections	199	1%	\$514,991	0%
None	261	1%	\$335,030	0%
Undetermined	868	3%	\$164,762	0%
<b>Grand Total</b>	<b>25,390</b>	<b>100%</b>	<b>\$130,383,934</b>	<b>100%</b>

Thirty-one fires were not included in this table because the property use was not documented.

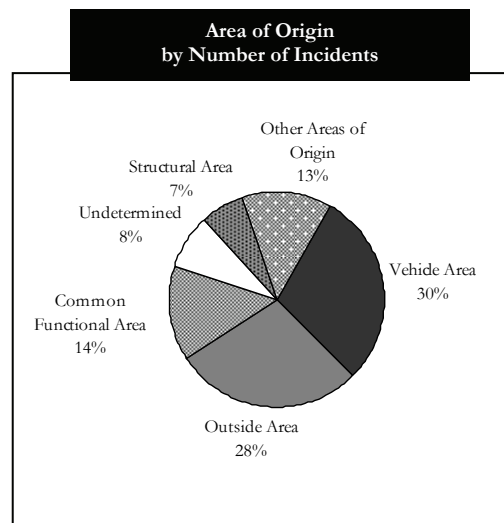


## Area of Origin

Area of origin is documented when the Fire Module is completed. Even though every fire has an area of origin, some fires do not require the Fire Module to be completed. Examples include fires that are confined to a non-combustible container, incident type code “fire, other,” and wildland fires documented through the Wildland Module. The table below includes only incident information documented in the Fire Module.

Common/functional areas was reported with the greatest dollar loss; figures totaling more than \$35 million. Vehicle areas was the leading area of origin reported in 2004, followed by outside areas. Undetermined areas accounted for 8% of the areas and 15% of the dollar loss.

<i>Area of Origin</i>	<i>Number of Incidents</i>	<i>% of Total Incidents</i>	<i>Total Dollar Loss</i>	<i>% of Total Dollar Loss</i>
Common/Functional Areas	1,971	14%	\$35,756,386	28%
Undetermined Areas	1,162	8%	\$18,443,618	15%
Structural Areas	904	7%	\$17,618,234	14%
Storage Areas	646	5%	\$16,970,704	13%
Vehicle Areas	4,060	29%	\$10,604,090	8%
Service Or Equipment Areas	406	3%	\$7,699,835	6%
Assembly Or Sales	266	2%	\$6,884,067	5%
Means of Egress	201	1%	\$4,772,710	4%
Outside Areas	3,927	28%	\$4,460,347	4%
Technical Processing Areas	52	0%	\$1,866,405	1%
Other Areas	302	2%	\$1,057,401	1%
Total	13,897	100%	\$126,133,797	100%



## Heat Sources

Heat Source is documented in the Fire Module in NFIRS 5.0. Fires confined to a non-combustible container, documented as “fire, other,” and heat sources documented in the optional Wildland Module are not included in the table below.

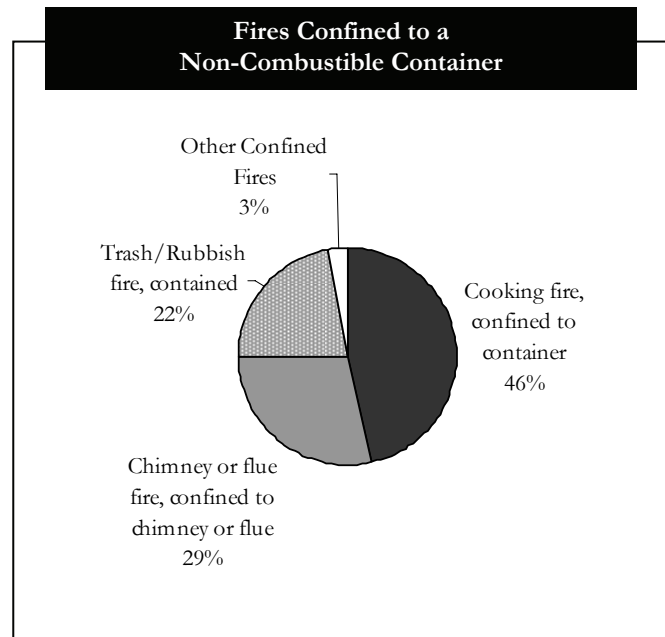
“Undetermined” heat source was reported in 33% of the incidents; the dollar loss associated with these incidents was estimated over \$55 million. Operating equipment was the leading known heat source. This category includes sparks, embers or flames from operating equipment, radiated or conducted heat from operating equipment, electrical arcing, and/or heat from operating equipment.

<i>Heat Source Category</i>	<i>Number of Incidents</i>	<i>% of Total Incidents</i>	<i>Total Dollar Loss</i>	<i>% of Total Dollar Loss</i>
Undetermined	4,613	33%	\$55,829,085	44%
Operating Equipment	4,084	29%	\$36,080,578	29%
Hot or Smoldering Object	1,681	12%	\$10,529,013	8%
Smoking Materials	944	7%	\$6,737,915	5%
Candles	216	2%	\$4,565,626	4%
Heat Source Other	593	4%	\$4,050,624	3%
Chemical or Natural	203	1%	\$2,345,655	2%
Matches & Lighters	665	5%	\$2,226,478	2%
Explosives & Fireworks	580	4%	\$1,690,991	1%
Multiple Heat Sources	83	1%	\$705,000	1%
Heat from another	1	0%	\$696,700	1%
Flares, Fusees, & Torches	234	2%	\$676,122	1%
<b>Total</b>	<b>13,897</b>	<b>100%</b>	<b>\$126,133,787</b>	<b>100%</b>

Sorted by dollar loss.  
Includes heat sources reported in the Fire Module.

Since the heat source is not documented for confined fires, it is important to take a closer look at these incidents.

- Cooking fires are the leading type of confined fire. Food should never be left unattended while it is cooking.
- Chimney and flue fires are the second confined fire type. These fires can be minimized by regular cleaning and maintenance of chimneys and flues.
- Trash and rubbish fires are the third leading type. These fires can be reduced by securing trash receptacles and avoiding the disposal hot or smoldering objects.

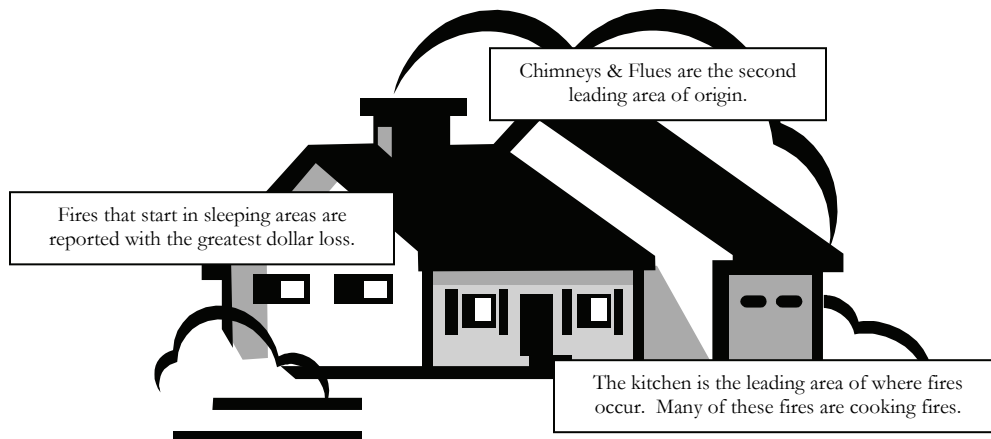


## Residential Properties

The table below is a breakdown of Area of Origin reported through the Fire Module for residential properties. Residential properties include one or two family dwellings, multifamily dwellings, hotels/motels, college housing, barracks, and dormitories.

### *Area of Origin for Residential Properties*

<i>Area of Origin</i>	<i>Number of Incidents</i>	<i>% of Total Incidents</i>	<i>Dollar Loss</i>	<i>% of Total Dollar Loss</i>
Common Areas	1,682	37%	\$31,696,279	41%
Structural Areas	698	15%	\$13,838,418	18%
Storage Areas	294	6%	\$9,159,302	12%
Undetermined Areas	291	6%	\$6,530,718	8%
Assembly Areas	233	5%	\$6,291,697	8%
Outside Areas	633	14%	\$3,551,962	5%
Exiting System	137	3%	\$2,231,844	3%
Service & Equipment Areas	210	5%	\$1,980,126	3%
Vehicle Areas	269	6%	\$1,675,120	2%
Other Areas	91	2%	\$637,200	1%
Technical Processing Areas	3	0%	\$551,500	1%
Total	4,541	100%	\$78,144,166	100%





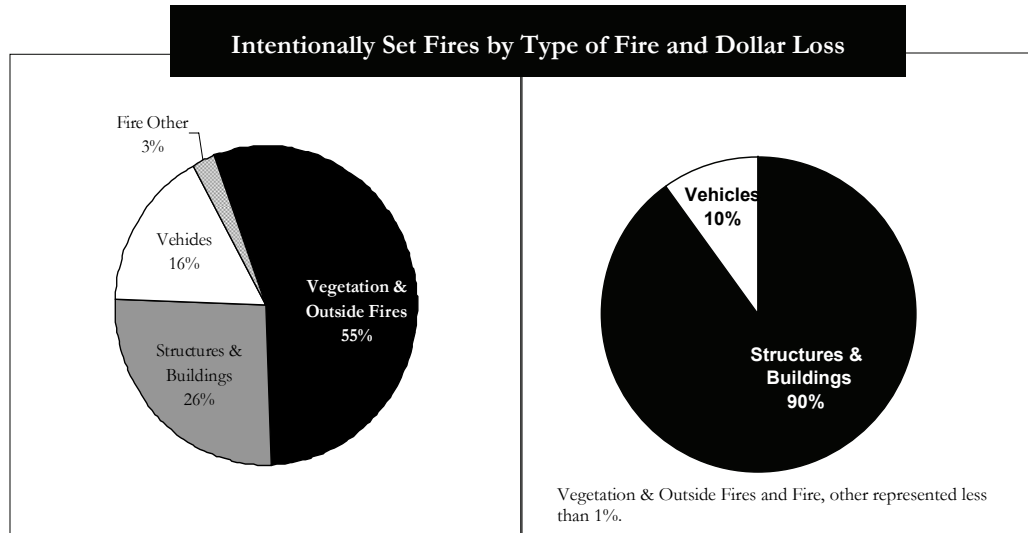
## Intentionally Set Fires

Intentionally set fires result in millions of dollars in property and content loss in our state. The table below is a breakdown of property use for intentionally set fires documented through the Fire Module.

<i>Property Use Category</i>	<i>Number of Incidents</i>	<i>% of Number of Incidents</i>	<i>Dollar Loss</i>	<i>% of Total Dollar Loss</i>
Residential	513	26%	\$6,906,990	63%
Assembly	52	3%	\$2,020,247	18%
Outside or Special Property	823	41%	\$575,644	5%
Mercantile & Business	62	3%	\$465,078	4%
Storage	75	4%	\$416,461	4%
Industrial, Utility, Defense, Agriculture, Mining	44	2%	\$291,684	3%
Other Property Use	70	4%	\$251,915	2%
Health Care, Detention, & Corrections	13	1%	\$27,800	0%
None	13	1%	\$20,000	0%
Education	67	3%	\$16,811	0%
Undetermined	259	13%	\$5,727	0%
Manufacturing	2	0%	\$300	0%
<b>Total</b>	<b>1,993</b>	<b>100%</b>	<b>\$10,998,657</b>	<b>100%</b>

Comparing previous annual report's data to the 2004 NFIRS data, the number of intentionally set fires continues to rise as the number of agencies participating increase. Dollar loss varies from year to year. In 2002, the Weatherwax School Fire in Aberdeen resulted in losses of more than \$15 million.

Year	Incidents	Dollar Loss
2001	931	\$3,698,993
2002	932	\$19,690,891
2003	1,583	\$7,974,804
2004	1,993	\$10,998,657

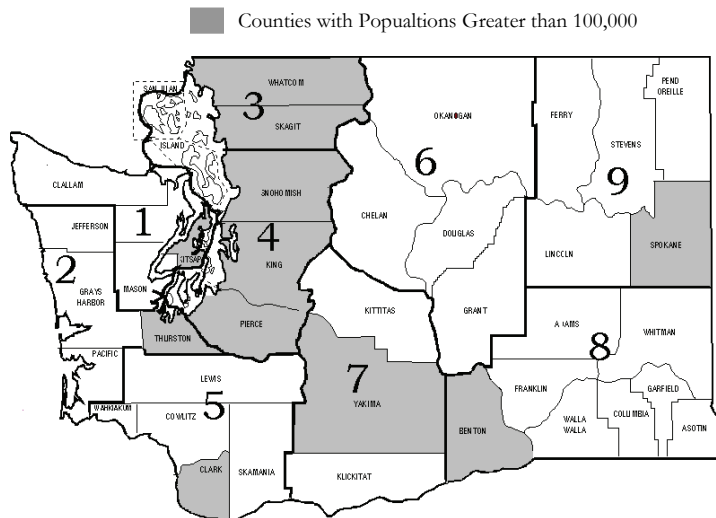


## Incidents Based on Population

In Washington State, 11 of the 39 counties have populations of over 100,000, representing 83% of our state's total population. The table below provides a breakdown of incident type categories based on counties grouped by populations over or under 100,000.

<i>Population Estimates</i>	<i>11 Counties with Populations Over 100,000</i>		<i>28 Counties with Populations Under 100,000</i>		<i>Total Population</i>
	<i>5,135,002</i>	<i>83%</i>	<i>1,068,786</i>	<i>17%</i>	<i>6,203,789</i>
<i>Incident Type Category</i>	<i>Number of Incidents</i>	<i>% of Total Incidents Statewide</i>	<i>Number of Incidents</i>	<i>% of Total Incidents Statewide</i>	<i>Total Incidents</i>
Fire	19,748	4%	5,673	1%	25,421
Overpressure, Rupture, Explosion, Overheat	1,065	0%	144	0%	1,209
Rescue & Emergency Medical Service	261,149	58%	31,461	7%	292,610
Hazardous Condition (No Fire)	11,139	2%	1,736	0%	12,875
Service Call	28,410	6%	3,089	1%	31,499
Good Intent	33,955	8%	4,560	1%	38,515
False Alarm & False Calls	8,494	2%	1,324	0%	9,818
Fire Protection System Malfunction	11,093	2%	1,101	0%	12,194
Unintentional False Protection System Activation	16,046	4%	1,752	0%	17,798
Severe Weather & Natural Disaster	333	0%	95	0%	428
Other Types of Incidents	4,544	1%	233	0%	4,777
Undetermined	286	0%	4	0%	290
<b>Total Incidents</b>	<b>396,262</b>	<b>89%</b>	<b>51,172</b>	<b>11%</b>	<b>447,434</b>
<b>Dollar Loss as a Result of Fire</b>	<b>\$104,844,354</b>	<b>80%</b>	<b>\$25,539,580</b>	<b>20%</b>	<b>\$130,383,934</b>

Population estimations based on US Census Bureau figures.

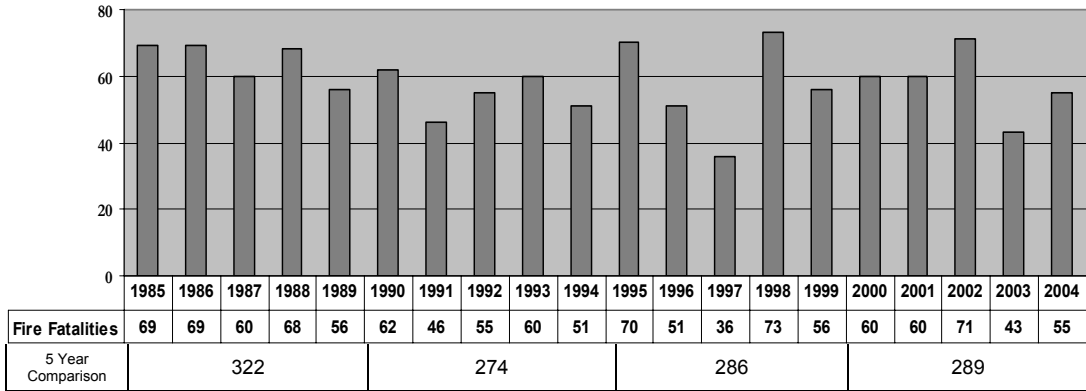


## Fire Fatalities

RCW 48.48.065 requires agencies to report any death resulting from fire within two business days to the Office of the State Fire Marshal. The statistical information reflected in this report is based on incidents reported in accordance with the statute.

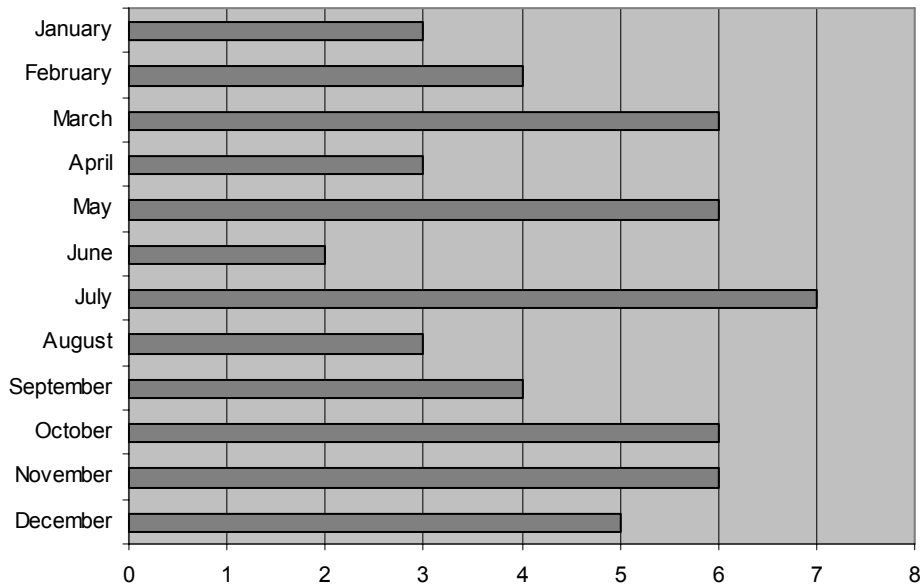
In the past 20 years 1,171 people have lost their lives in deadly fires in Washington State. In 2004 alone, fire agencies reported 55 fire fatalities to the Office of the State Fire Marshal, representing an increase of approximately 22% over the previous year.

### 1985 - 2004



Historically, a higher number of fire deaths occur in winter months compared to summer months. In 2004, the leading month was July accounting for 7 deaths (13%). Six fire fatalities were reported in March, May, October and November, each month representing 11% of the total reported deaths.

### 2004 Fire Fatalities by Month



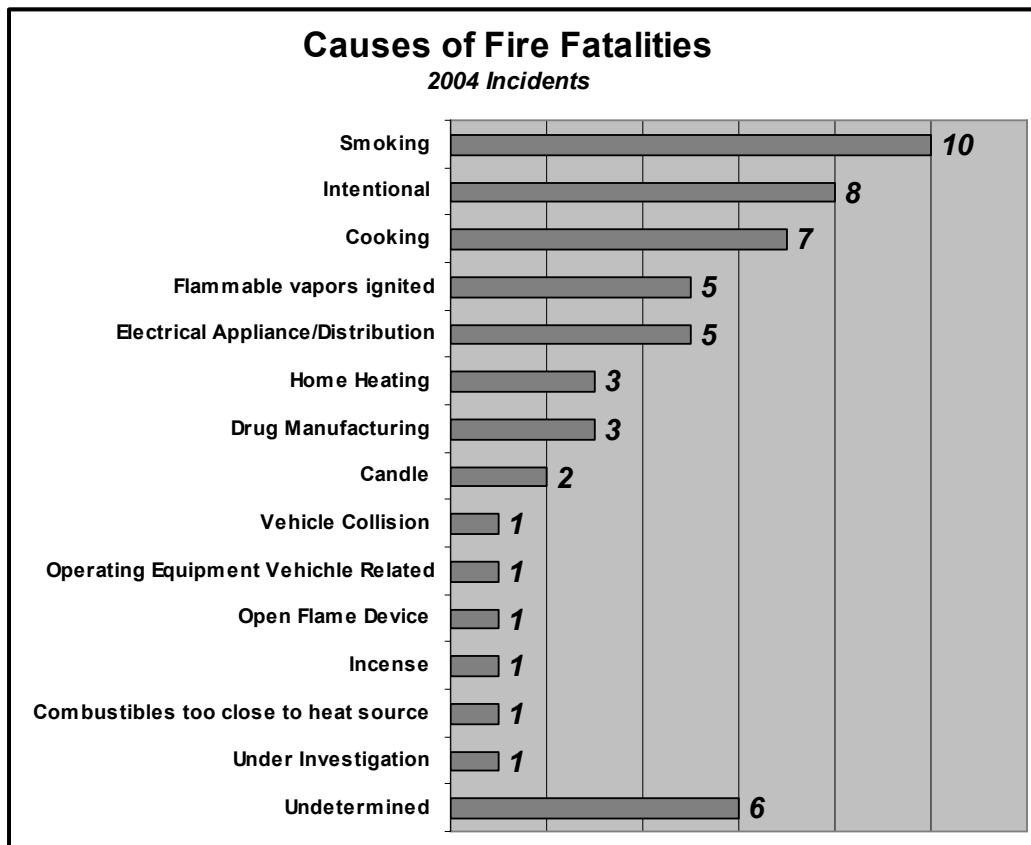
## Causes of Fire Fatalities

Smoking continues to be the leading cause of fire deaths in Washington (18%). Of the smoking related deaths reported, 90% occurred in residential structures. Smoking related deaths can almost be eliminated if smoking is avoided while drowsy or while in sleeping areas. In addition, smoking should never be done while oxygen treatment is in use.

Intentionally set fires were the second leading cause in 2004 (15%), with three intentionally set fires claiming the lives of eight people. Tragically, one of these incidents claimed the lives of five people.

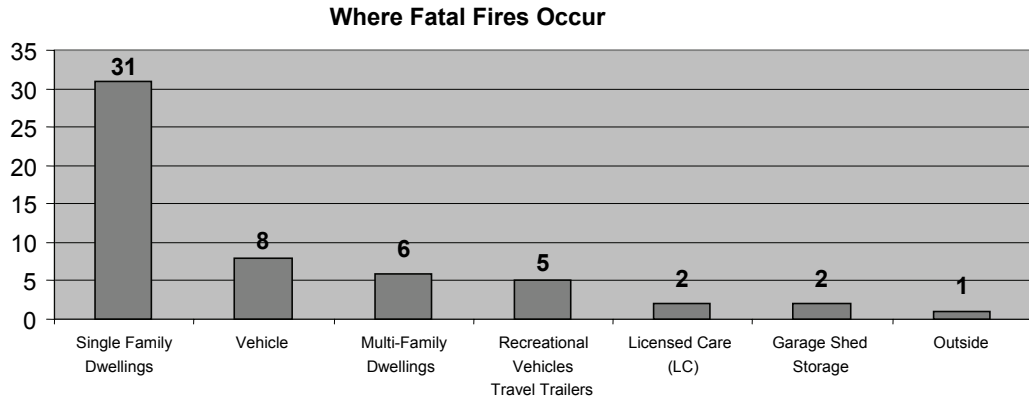
The third leading cause was cooking fires, representing 13% of the total number of reported deaths, all of which occurred in residential structures. Cooking should never be left unattended and loose fitting clothing should be kept away from the heat sources.

In 2004, approximately 11% of the fatal fire incidents were reported with undetermined heat sources.



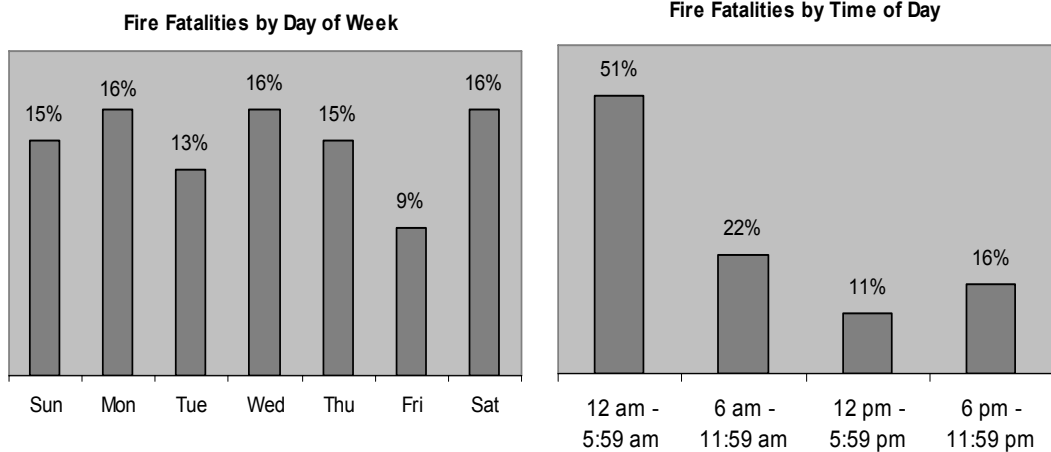
## Where Fire Fatalities Occur

Fatal fires occur most frequently in places where people live and sleep. The combination of single family dwellings, multi-family dwellings, and recreational vehicles and travel trailers account for 76% of the total reported incidents in 2004.



## When Fire Fatalities Occur

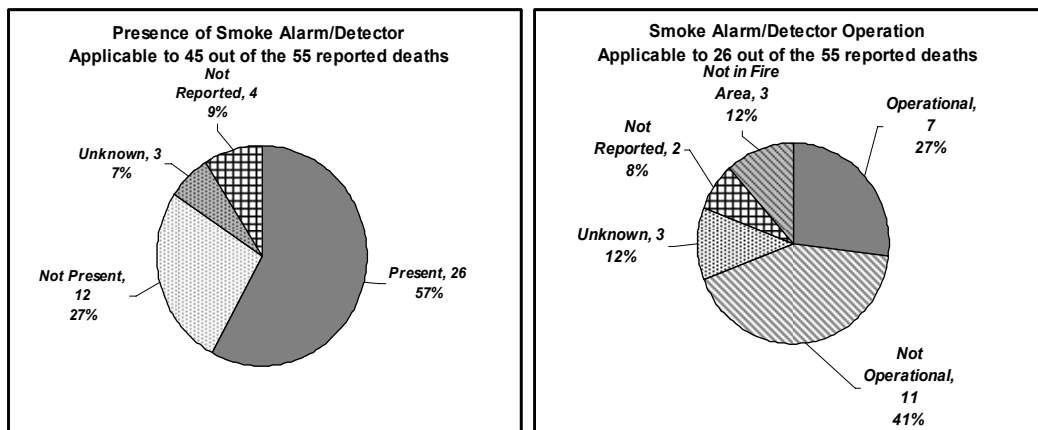
Deadly fires can strike at anytime of the day or night. In 2004, fire fatalities most frequently occurred on Mondays, Wednesdays and Saturdays.



## Fire Fatalities and Fire Protection Devices

Fire protection devices such as smoke alarms and fire sprinklers play a key role in reducing the loss of life in fires. Smoke alarms provide early notification to the occupants that a fire is present, while fire sprinklers are designed to confine the fire to the room of origin.

In 2004, 10 fire deaths (18%) occurred in vehicles or where no fire protection devices are installed. Of the 45 remaining, 7 fire deaths occurred where smoke detectors were reported to be operational. Human factors played a role in the majority of these incidents. Some may not have heard the smoke alarm because they were sleeping. Others had physical or mental disabilities or may have been under the influence of drugs or alcohol.



Fire sprinklers were reported to be present in the building where three of the fire deaths occurred in 2004. The reasons the sprinkler system did not operate in these incidents were:

Incident 1: The fire occurred outside the building.

Incident 2: The fire occurred on the person's body.

Incident 3: The sprinkler system was not installed in the area where the fire occurred.

## Fire Deaths by County

Over the past five years, 289 fire fatalities have been reported. During that time period Adams, Ferry, Garfield, Lincoln, Wahkiakum, and Whitman counties have had no fire deaths. The densely populated counties of King, Pierce, and Snohomish combined account for 41% of the total deaths reported.

Fire Deaths by County						
<i>COUNTY</i>	<i>2000</i>	<i>2001</i>	<i>2002</i>	<i>2003</i>	<i>2004</i>	<i>Total</i>
<b>Adams</b>	<b>0</b>	<b>0</b>	<b>0</b>	<b>0</b>	<b>0</b>	<b>0</b>
Asotin	0	0	2	0	0	2
Benton	3	1	0	1	2	7
Chelan	0	0	2	0	0	2
Clallam	1	4	0	0	1	6
Clark	1	1	3	2	2	9
Columbia	0	0	0	0	0	0
Cowlitz	3	0	0	0	2	5
Douglas	0	0	0	1	0	1
<b>Ferry</b>	<b>0</b>	<b>0</b>	<b>0</b>	<b>0</b>	<b>0</b>	<b>0</b>
Franklin	1	0	0	0	0	1
<b>Garfield</b>	<b>0</b>	<b>0</b>	<b>0</b>	<b>0</b>	<b>0</b>	<b>0</b>
Grant	0	2	0	0	0	2
Grays Harbor	5	2	4	3	2	16
Island	0	2	1	0	0	3
Jefferson	0	3	0	0	0	3
King	15	8	12	9	10	54
Kitsap	7	1	5	0	1	14
Kittitas	0	0	0	1	1	2
Klickitat	2	0	0	1	0	3
Lewis	0	3	0	3	0	6
<b>Lincoln</b>	<b>0</b>	<b>0</b>	<b>0</b>	<b>0</b>	<b>0</b>	<b>0</b>
Mason	1	2	1	0	1	5
Okanogan	0	5	3	2	2	12
Pacific	2	0	0	1	1	4
Pend Oreille	0	3	1	0	0	4
Pierce	2	5	12	6	13	38
San Juan	0	1	0	0	0	1
Skagit	2	1	2	0	0	5
Skamania	0	0	1	0	0	1
Snohomish	6	7	6	4	4	27
Spokane	6	5	3	1	7	22
Stevens	0	0	0	1	1	2
Thurston	1	2	6	4	2	15
<b>Wahkiakum</b>	<b>0</b>	<b>0</b>	<b>0</b>	<b>0</b>	<b>0</b>	<b>0</b>
Walla Walla	0	1	1	0	0	2
Whatcom	1	0	0	1	0	2
<b>Whitman</b>	<b>0</b>	<b>0</b>	<b>0</b>	<b>0</b>	<b>0</b>	<b>0</b>
Yakima	1	1	6	2	3	13
Grand Total	60	60	71	43	55	289

## Region 1

Clallam, Jefferson, Kitsap, and Mason counties are part of Region 1. In 2004, 78% of the fire agencies in this region reported NFIRS 5.0 data to the Office of the State Fire Marshal.



### Incidents by Category

Incident Category	Number of Incidents	% of Incidents	Dollar Loss	% of Dollar Loss
Fire	1,303	4%	\$7,379,230	98%
Service Calls	3,728	13%	\$61,900	1%
Severe Weather & Natural Disaster	12	0%	\$26,516	0%
Hazardous Condition (No Fire)	896	3%	\$16,920	0%
Rescue & Emergency Medical Service	18,752	65%	\$8,200	0%
Fire Protection System Malfunction	472	2%	\$3,000	0%
Overpressure, Rupture, Explosion, Overheat	76	0%	\$805	0%
Good Intent Calls	2,391	8%	\$0	0%
False Alarm & False Calls	470	2%	\$0	0%
Unintentional False Protection System Activation	756	3%	\$0	0%
Other Types of Incidents	198	1%	\$0	0%
<b>Total</b>	<b>29,054</b>	<b>100%</b>	<b>\$7,496,571</b>	<b>100%</b>

Sorted by Dollar Loss.

Excludes mutual aid incidents.

### Fires Incidents by Category

Fire Categories	Number of Incidents	% of Incidents	Dollar Loss	% of Dollar Loss
Structures (including confined fires)	478	37%	\$6,554,335	89%
Vehicles	245	19%	\$671,365	9%
Fixed Mobile Property	32	2%	\$118,760	2%
Natural Vegetation	309	24%	\$16,600	0%
Outside Storage & Equipment	35	3%	\$16,000	0%
Outside Rubbish	143	11%	\$1,150	0%
Fire Other	59	5%	\$1,020	0%
Cultivated Vegetation	2	0%	\$0	0%
<b>Total</b>	<b>1,303</b>	<b>100%</b>	<b>\$7,379,230</b>	<b>100%</b>

Sorted by Dollar Loss.

### Confined Fires

Confined Fires by Type	Number of Incidents	% of Total Number of Incidents	Dollar Loss	% of Total Dollar Loss
Chimney or flue fire, confined to chimney or flue	119	46%	\$17,101	53%
Cooking fire, confined to container	74	28%	\$12,274	38%
Fuel burner/boiler malfunction, fire confined	8	3%	\$700	2%
Trash or rubbish fire, contained	60	23%	\$2,356	7%
<b>Total</b>	<b>261</b>	<b>100%</b>	<b>\$32,431</b>	<b>100%</b>

These incidents are included in the fire counts listed above. Confined fires do not require area of origin or heat sources to be documented.



## Region 1

### *Fires by: Property Use*

<i>Property Category</i>	<i>Number of Incidents</i>	<i>% of Total Incidents</i>	<i>Dollar Loss</i>	<i>% of Total Dollar Loss</i>
Residential	559	559	\$5,472,859	74%
Storage	42	42	\$804,920	11%
Outside or Special Properties	534	534	\$646,021	9%
Manufacturing and Processing	10	10	\$175,000	2%
Mercantile and Business	42	42	\$134,500	2%
Assembly	33	33	\$122,730	2%
Industrial, Utility, Defense, Agriculture, Mining	20	20	\$15,500	0%
Health Care, Detention, and Corrections	15	15	\$5,100	0%
Other Property Use	17	17	\$2,500	0%
Educational	17	17	\$100	0%
Undetermined	10	10	\$0	0%
None	4	4	\$0	0%
<b>Total</b>	<b>1,303</b>	<b>1,303</b>	<b>\$7,379,230</b>	<b>100%</b>

Sorted by dollar loss.

### *Area of Origin*

<i>Area of Origin</i>	<i>Number of Incidents</i>	<i>% of Total Incidents</i>	<i>Dollar Loss</i>	<i>% of Dollar Loss</i>
Storage Area	30	4%	\$2,548,332	35%
Common/Functional Area	131	17%	\$1,763,924	24%
Vehicle Area	214	28%	\$638,145	9%
Undetermined	70	9%	\$631,018	9%
Structural Area	43	6%	\$577,077	8%
Assembly Or Sales	26	3%	\$470,818	6%
Outside Area	133	18%	\$302,150	4%
Service Or Equipment Area	74	10%	\$275,851	4%
Means of Egress	14	2%	\$140,715	2%
Other Areas	22	3%	\$1,500	0%
Technical Processing Area	2	0%	\$0	0%
<b>Total</b>	<b>759</b>	<b>100%</b>	<b>\$7,349,530</b>	<b>100%</b>

Sorted by dollar loss.

### *Heat Source*

<i>Heat Source Category</i>	<i>Number of Incidents</i>	<i>% of Total Incidents</i>	<i>Total Dollar Loss</i>	<i>% of Total Dollar Loss</i>
Undetermined	203	27%	\$3,930,888	53%
Operating Equipment	287	38%	\$2,027,683	28%
Smoking Materials	36	5%	\$490,429	7%
Hot or Smoldering Object	119	16%	\$419,378	6%
Matches & Lighters	22	3%	\$182,450	2%
Candles	9	1%	\$100,150	1%
Heat Source Other	29	4%	\$91,650	1%
Heat from another	0	0%	\$53,500	1%
Chemical or Natural	11	1%	\$21,500	0%
Explosives & Fireworks	19	3%	\$17,000	0%
Flares, Fusees, & Torches	23	3%	\$14,402	0%
Multiple Heat Sources	1	0%	\$500	0%
<b>Total</b>	<b>759</b>	<b>100%</b>	<b>\$7,349,530</b>	<b>100%</b>

Sorted by dollar loss.

## Region 1 Incident Summary

<i>County</i>	<i>Fire Agency Name</i>	<i>Number of Incidents</i>	<i>Exposures</i>	<i>Mutual or Automatic Aid Given</i>	<i>Total Incident Reports</i>	<i>Dollar Loss</i>
<i>Clallam</i>	Clallam #1, Forks	0	0	0	0	\$0
	Clallam #2, Port Angeles	880	0	21	901	\$0
	Clallam #3, Sequim	2,184	0	11	2,195	\$6,000
	Clallam #4, Joyce	152	0	8	160	\$0
	Clallam #5, Clallam Bay/Seki	16	0	0	16	\$0
	Clallam #6, Quillayute Prairie	4	0	0	4	\$6,000
	La Push Fire Dept	0	0	0	0	\$0
	Port Angeles Fire Dept	2,202	2	5	2,209	\$424,781
	<b>Total</b>	5,438	2	45	5,485	\$436,781
<i>Jefferson</i>	Jefferson #1, Chimacum	814	0	144	958	\$182,450
	Jefferson #2, Quilcene	248	0	62	310	\$460,020
	Jefferson #3, Port Ludlow	453	0	121	574	\$1,463,600
	Jefferson #4, Brinnon	208	0	33	241	\$115,000
	Jefferson #5, Discovery Bay	0	0	0	0	\$0
	Jefferson #6	282	0	229	511	\$30,950
	Jefferson #7, Clearwater	0	0	0	0	\$0
	Port Townsend Fire Dept	1,412	0	261	1,673	\$172,850
<b>Total</b>	3,417	0	850	4,267	\$2,424,870	
<i>Kitsap</i>	Bremerton Fire Dept	0	0	6	6	\$0
	Central Kitsap Fire & Rescue	6,409	3	322	6,734	\$1,325,418
	Kitsap #10, North Kitsap	1	0	15	16	\$0
	Kitsap #18/City of Poulsbo	1,494	0	144	1,638	\$18,200
	Kitsap #2, Bainbridge Island	491	0	21	512	\$191,000
	South Kitsap Fire & Rescue	8,177	0	177	8,354	\$2,131,599
	<b>Total</b>	16,572	3	685	17,260	\$3,666,217
<i>Mason</i>	Mason #1, Hoodspout	0	0	0	0	\$0
	Mason #11, Shelton	0	0	0	0	\$0
	Mason #12, Matlock	0	0	0	0	\$0
	Mason #13, Elma	116	0	17	133	\$0
	Mason #16, Dayton	153	0	7	160	\$0
	Mason #17, Lilliwaup/Eldon	62	0	6	68	\$3,500
	Mason #18, Lake Cushman	25	0	0	25	\$0
	Mason #2, Belfair	282	1	46	329	\$758,400
	Mason #3, Grapeview	197	0	9	206	\$0
	Mason #4, Arcadia/Kamilche	798	0	40	838	\$0
	Mason #5, Allyn/Agate/Shelton	12	0	0	12	\$0
	Mason #6, Union	45	0	36	81	\$0
	Mason #9, Skokomish Valley	257	0	52	309	\$0
	Mason Co #8, Tahuya	0	0	0	0	\$0
	Shelton Fire Dept	1,680	0	38	1,718	\$206,803
<b>Total</b>	3,627	1	251	3,879	\$968,703	
<b>Regional Total</b>	29,054	6	1,831	30,891	\$7,496,571	

## Region 2

Grays Harbor, Pacific, and Thurston counties are part of Region 2. In 2004, 85% of the fire agencies in Region 2 submitted NFIRS 5.0 data to the Office of the State Fire Marshal.



### Incidents by Category

<i>Incident Category</i>	<i>Number of Incidents</i>	<i>% of Incidents</i>	<i>Dollar Loss</i>	<i>% of Dollar Loss</i>
Fire	1,850	6%	\$6,249,655	95%
Overpressure, Rupture, Explosion, Overheat	40	0%	\$200,110	3%
Service Calls	1,518	5%	\$67,075	1%
Rescue & Emergency Medical Service	21,028	71%	\$47,800	1%
Hazardous Condition (No Fire)	588	2%	\$20,300	0%
Other Types of Incidents	81	0%	\$10,000	0%
Good Intent Calls	2,390	8%	\$0	0%
Undetermined	4	0%	\$0	0%
False Alarm & False Calls	550	2%	\$0	0%
Fire Protection System Malfunction	603	2%	\$0	0%
Unintentional False Protection System Activation	905	3%	\$0	0%
Severe Weather & Natural Disaster	27	0%	\$0	0%
<b>Total</b>	<b>29,584</b>	<b>100%</b>	<b>\$6,594,940</b>	<b>100%</b>

Sorted by Dollar Loss.  
Excludes mutual aid incidents.

### Fire Incidents by Category

<i>Fire Categories</i>	<i>Number of Incidents</i>	<i>% of Incidents</i>	<i>Dollar Loss</i>	<i>% of Dollar Loss</i>
Structures (including confined fires)	537	29%	\$5,843,065	93%
Vehicle	301	16%	\$325,130	5%
Fixed Mobile Property	19	1%	\$69,000	1%
Fire Other	253	14%	\$7,700	0%
Natural Vegetation	385	21%	\$2,600	0%
Outside Storage & Equipment	41	2%	\$1,370	0%
Outside Rubbish	311	17%	\$790	0%
Cultivated Vegetation	3	0%	\$0	0%
<b>Total</b>	<b>1,850</b>	<b>100%</b>	<b>\$6,249,655</b>	<b>100%</b>

Sorted by Dollar Loss.

### Confined Fires

<i>Confined Fire by Type</i>	<i>Number of Incidents</i>	<i>% of Total Number of Incidents</i>	<i>Dollar Loss</i>	<i>% of Total Dollar Loss</i>
Fuel burner/boiler malfunction, fire confined	6	2%	\$12,000	42%
Cooking fire, confined to container	71	28%	\$11,300	39%
Chimney or flue fire, confined to chimney or flue	135	54%	\$5,500	19%
Incinerator overload or malfunction, fire confined	1	0%	\$0	0%
Trash or rubbish fire, contained	37	15%	\$0	0%
<b>Total</b>	<b>250</b>	<b>100%</b>	<b>\$28,800</b>	<b>100%</b>

These incidents are included in the fire counts listed above. Confined fires do not require area of origin or heat sources to be documented.

## Region 2

### *Fires by: Property Use*

<i>Property Category</i>	<i>Number of Incidents</i>	<i>% of Total Incidents</i>	<i>Dollar Loss</i>	<i>% of Total Dollar Loss</i>
Residential	807	44%	\$3,975,365	64%
Mercantile and Business	59	3%	\$1,084,655	17%
Storage	48	3%	\$437,745	7%
Industrial, Utility, Defense, Agriculture, Mining	29	2%	\$372,000	6%
Outside or Special Properties	638	35%	\$121,240	2%
Manufacturing and Processing	16	1%	\$102,700	2%
Undetermined	49	3%	\$85,550	1%
Assembly	35	2%	\$49,150	1%
Other Property Use	63	3%	\$12,000	0%
Educational	29	2%	\$7,000	0%
None	58	3%	\$2,050	0%
Health Care, Detention, and Corrections	10	1%	\$200	0%
<b>Grand Total</b>	<b>1,841</b>	<b>100%</b>	<b>\$6,249,655</b>	<b>100%</b>

Sorted by dollar loss.

Property use not reported for 9 incidents

### *Area of Origin*

<i>Area of Origin</i>	<i>Number of Incidents</i>	<i>% of Total Incidents</i>	<i>Dollar Loss</i>	<i>% of Dollar Loss</i>
Common/Functional Area	128	15%	\$1,568,085	26%
Assembly Or Sales	20	2%	\$914,400	15%
Structural Area	51	6%	\$910,700	15%
Storage Area	40	5%	\$740,845	12%
Undetermined	125	15%	\$657,250	11%
Means of Egress	19	2%	\$590,200	10%
Service Or Equipment Area	24	3%	\$407,735	7%
Vehicle Area	224	27%	\$256,080	4%
Technical Processing Area	2	0%	\$20,000	0%
Outside Area	188	22%	\$7,550	0%
Other Areas	17	2%	\$900	0%
<b>Total</b>	<b>838</b>	<b>100%</b>	<b>\$6,073,745</b>	<b>100%</b>

Sorted by Dollar Loss.

### *Heat Source*

<i>Heat Source Category</i>	<i>Number of Incidents</i>	<i>% of Total Incidents</i>	<i>Total Dollar Loss</i>	<i>% of Total Dollar Loss</i>
Undetermined	306	37%	\$2,792,920	46%
Operating Equipment	226	27%	\$1,348,715	22%
Smoking Materials	33	4%	\$720,600	12%
Hot or Smoldering Object	118	14%	\$712,600	12%
Candles	9	1%	\$247,650	4%
Heat Source Other	56	7%	\$184,500	3%
Matches & Lighters	39	5%	\$54,060	1%
Explosives & Fireworks	28	3%	\$12,500	0%
Flares, Fuses, & Torches	12	1%	\$200	0%
Chemical or Natural	7	1%	\$0	0%
Multiple Heat Sources	4	0%	\$0	0%
<b>Total</b>	<b>838</b>	<b>100%</b>	<b>\$6,073,745</b>	<b>100%</b>

Sorted by Dollar Loss.

## Region 2 Incident Summary

<i>County</i>	<i>Fire Agency Name</i>	<i>Number of Incidents</i>	<i>Exposures</i>	<i>Mutual or Automatic Aid Given</i>	<i>Total Incident Reports</i>	<i>Dollar Loss</i>
<i>Grays Harbor</i>	Aberdeen Fire Dept	461	0	22	483	\$501,310
	Cosmopolis Fire Dept	5	0	0	5	\$127,000
	Elma Fire Dept	66	0	60	126	\$0
	Grays Harbor #1, Oakville	52	0	10	62	\$113,980
	Grays Harbor #10, Wishkah/East Hoquiam	20	0	2	22	\$140,500
	Grays Harbor #11, Grayland	25	0	5	30	\$21,500
	Grays Harbor #12, McCleary	52	0	2	54	\$70,100
	Grays Harbor #14, Markham/Ocosta/Bay City	76	0	11	87	\$0
	Grays Harbor #15, Cosmopolis	0	0	0	0	\$0
	Grays Harbor #16, Copalis Crossing	0	0	0	0	\$0
	Grays Harbor #17, Humptulip/Axford	24	0	3	27	\$93,050
	Grays Harbor #2, Central Park	585	0	34	619	\$396,000
	Grays Harbor #4, Amanda Park	4	0	0	4	\$0
	Grays Harbor #5, Elma/Satsop	0	0	0	0	\$0
	Grays Harbor #6, North Hoquiam	15	0	1	16	\$85,000
	Grays Harbor #7, Copalis Beach/Ocean City	0	0	0	0	\$0
	Grays Harbor #8, Pacific Beach	6	0	0	6	\$50,000
	Hoquiam Fire Dept	179	0	28	207	\$181,160
	McCleary Fire Dept	56	0	37	93	\$88,250
	Montesano Fire Dept	502	0	5	507	\$0
Ocean Shores Fire Dept	238	0	11	249	\$400	
Westport Fire Dept	276	0	22	298	\$0	
	<i>Total</i>	2,642	0	253	2,895	\$1,868,250
<i>Pacific</i>	Ilwaco Fire Dept	44	0	13	57	\$500
	Long Beach Fire Dept	36	1	9	46	\$127,100
	Pacific #1, Ocean Park	1,868	0	507	2,375	\$430,510
	Pacific #2, Chinook Valley	13	0	0	13	\$0
	Pacific #3, Willapa Valley	35	0	0	35	\$73,045
	Pacific #4, Naselle	0	0	0	0	\$0
	Pacific #5, North Cove/Tokeland	26	0	1	27	\$0
	Pacific #6, Bay Center	0	0	0	0	\$0
	Pacific #7, Nemah	23	0	1	24	\$0
	Raymond Fire Dept	81	0	1	82	\$217,200
	South Bend/Pacific #8, Rural South Bend	12	0	0	12	\$300
	<i>Total</i>	2,138	1	532	2,671	\$848,655
<i>Thurston</i>	Bucoda Fire Dept	14	0	9	23	\$0
	Lacey Fire District 3	8,470	0	194	8,664	\$320,675
	Olympia Fire Dept	6,932	0	114	7,046	\$2,604,610
	SE Thurston Fire & EMS	2,604	0	5	2,609	\$0
	Thurston #1, Rochester/Grand Mound	245	0	46	291	\$0
	Thurston #11, Littlerock	1,045	0	288	1,333	\$0
	Thurston #12, Tenino	590	0	52	642	\$0
	Thurston #13, Griffin	362	0	21	383	\$416,500
	Thurston #16, Gibson Valley	12	0	89	101	\$0
	Thurston #5, Black Lake	0	0	0	0	\$0
	Thurston #6, East Olympia	755	0	67	822	\$0
	Thurston #7, North Olympia	272	0	55	327	\$0
	Thurston #8, South Bay	435	0	63	498	\$0
	Thurston #9, McLane	804	0	553	1,357	\$30,000
Tumwater Fire Dept	2,264	0	77	2,341	\$506,250	
	<i>Total</i>	24,804	0	1,633	26,437	\$3,878,035
<i>Regional Total</i>		29,584	1	2,418	32,003	\$6,594,940

### Region 3

Island, San Juan, Skagit, and Whatcom counties are part of Region 3. In 2004, 77% of the fire agencies submitted incident data to the Office of the State Fire Marshal.



### Incidents by Category

Incident Category	Number of		% of Dollar	
	Incidents	Incidents	Dollar Loss	Loss
Fire	1,658	5%	\$5,963,772	98%
Rescue & Emergency Medical Service	22,178	73%	\$85,200	1%
Fire Protection System Malfunction	489	2%	\$30,040	0%
Service Calls	1,633	5%	\$28,426	0%
Unintentional False Protection System Activation	1,028	3%	\$5,000	0%
Hazardous Condition (No Fire)	777	3%	\$450	0%
Good Intent Calls	1,641	5%	\$0	0%
False Alarm & False Calls	661	2%	\$0	0%
Other Types of Incidents	123	0%	\$0	0%
Severe Weather & Natural Disaster	57	0%	\$0	0%
Overpressure, Rupture, Explosion, Overheat	46	0%	\$0	0%
Undetermined	14	0%	\$0	0%
<b>Grand Total</b>	<b>30,305</b>	<b>100%</b>	<b>\$6,112,888</b>	<b>100%</b>

Sorted by Dollar Loss.  
Excludes mutual aid incidents.

### Fire Incidents by Category

Fire Categories	Number of		% of Dollar	
	Incidents	% of Incidents	Dollar Loss	Loss
Structures (including confined fires)	510	31%	\$4,427,540	74%
Vehicle	255	15%	\$1,291,530	22%
Fire Other	109	7%	\$146,200	2%
Fixed Mobile Property	24	1%	\$87,200	1%
Outside Storage & Equipment	93	6%	\$10,050	0%
Cultivated Vegetation	9	1%	\$1,100	0%
Natural Vegetation	401	24%	\$150	0%
Outside Rubbish	257	16%	\$2	0%
<b>Grand Total</b>	<b>1,658</b>	<b>100%</b>	<b>\$5,963,772</b>	<b>100%</b>

Sorted by Dollar Loss.

### Confined Fires

Confined Fire Type	Number of		% of Total	
	Incidents	Incidents	Dollar Loss	Dollar Loss
Trash or rubbish fire, contained	48	17%	\$17,500	69%
Cooking fire, confined to container	125	45%	\$6,266	25%
Chimney or flue fire, confined to chimney or flue	97	35%	\$1,700	7%
Fuel burner/boiler malfunction, fire confined	5	2%	\$0	0%
Incinerator overload or malfunction, fire confined	1	0%	\$0	0%
<b>Total</b>	<b>276</b>	<b>100%</b>	<b>\$25,466</b>	<b>100%</b>

These incidents are included in the fire counts listed above. Confined fires do not require area of origin or heat sources to be documented.

## Region 3

### *Fires by: Property Use*

<i>Property Category</i>	<i>Number of Incidents</i>	<i>% of Total Incidents</i>	<i>Dollar Loss</i>	<i>% of Total Dollar Loss</i>
Residential	735	44%	\$4,055,620	68%
Outside or Special Properties	717	43%	\$1,154,602	19%
Industrial, Utility, Defense, Agriculture, Mining	24	1%	\$432,200	7%
Manufacturing and Processing	14	1%	\$143,500	2%
Storage	41	2%	\$136,550	2%
Educational	9	1%	\$18,000	0%
Other Property Use	16	1%	\$12,200	0%
None	5	0%	\$4,980	0%
Mercantile and Business	30	2%	\$3,200	0%
Health Care, Detention, and Corrections	18	1%	\$2,100	0%
Undetermined	14	1%	\$500	0%
Assembly	29	2%	\$320	0%
<b>Total</b>	<b>1,652</b>	<b>100%</b>	<b>\$5,963,772</b>	<b>100%</b>

Sorted by dollar loss.

Property use not reported for 6 incidents.

### *Area of Origin*

<i>Area of Origin</i>	<i>Number of Incidents</i>	<i>% of Total Incidents</i>	<i>Dollar Loss</i>	<i>% of Dollar Loss</i>
Common/Functional Area	91	11%	\$1,204,300	20%
Structural Area	57	7%	\$1,198,779	20%
Undetermined	148	18%	\$1,018,500	17%
Service Or Equipment Area	29	4%	\$933,350	16%
Vehicle Area	203	25%	\$611,030	10%
Assembly Or Sales	24	3%	\$440,000	7%
Storage Area	34	4%	\$322,250	5%
Other Areas	29	4%	\$80,000	1%
Outside Area	171	21%	\$65,695	1%
Technical Processing Area	1	0%	\$30,000	1%
Means of Egress	18	2%	\$18,550	0%
<b>Total</b>	<b>805</b>	<b>100%</b>	<b>\$5,922,454</b>	<b>100%</b>

Sorted by Dollar Loss.

### *Heat Source*

<i>Heat Source Category</i>	<i>Number of Incidents</i>	<i>% of Total Incidents</i>	<i>Total Dollar Loss</i>	<i>% of Total Dollar Loss</i>
Undetermined	333	41%	\$2,595,330	44%
Operating Equipment	208	26%	\$2,040,850	34%
Heat Source Other	41	5%	\$550,309	9%
Hot or Smoldering Object	82	10%	\$450,450	8%
Heat from another	0	0%	\$130,000	2%
Smoking Materials	44	5%	\$89,395	2%
Flares, Fusees, & Torches	17	2%	\$28,000	0%
Chemical or Natural	10	1%	\$20,000	0%
Candles	6	1%	\$12,000	0%
Explosive & Fireworks	19	2%	\$5,770	0%
Matches & Lighters	40	5%	\$350	0%
Multiple Heat Sources	5	1%	\$0	0%
<b>Total</b>	<b>805</b>	<b>100%</b>	<b>\$5,922,454</b>	<b>100%</b>

Sorted by Dollar Loss.

## Region 3 Incident Summary

<i>County</i>	<i>FD Name</i>	<i>Number of Incidents</i>	<i>Exposures</i>	<i>Mutual or Automatic Aid Given</i>	<i>Total Incident Reports</i>	<i>Dollar Loss</i>
<i>Island</i>	Island #1, Camano Island	1,281	0	28	1,309	\$83,850
	Oak Harbor Fire Dept	622	4	449	1,075	\$398,000
	Island #2, North Whidbey Island	1,159	0	16	1,175	\$0
	Island #3, South Whidbey Island	263	0	3	266	\$0
	Island #5, Central Whidbey Island	740	1	17	758	\$195,000
	<b>Total</b>	4,065	5	513	4,583	\$676,850
<i>San Juan</i>	Friday Harbor Fire Dept	68	0	17	85	\$15,050
	San Juan #2, Orcas Island	146	0	1	147	\$150
	San Juan #5, Shaw Island	6	0	0	6	\$350,000
	San Juan #3, San Juan Island	170	0	26	196	\$482,795
	San Juan #4, Lopez Island	63	0	0	63	\$119,000
	<b>Total</b>	453	0	44	497	\$966,995
<i>Skagit</i>	Anacortes Fire Dept	647	0	14	661	\$26,500
	Burlington Fire Dept	1,395	0	20	1,415	\$348,100
	Hamilton Fire Dept	0	0	0	0	\$0
	La Conner Fire Dept	0	0	0	0	\$0
	Mount Vernon Fire Dept	3,077	0	18	3,095	\$483,229
	Sedro-Woolley Fire Dept	1,199	0	6	1,205	\$771,500
	Skagit #10, Concrete	0	0	0	0	\$0
	Skagit #12, Bay View	3	0	1	4	\$12,200
	Skagit #14, Alger	0	0	0	0	\$0
	Skagit #15, Lake McMurray	16	0	0	16	\$20,500
	Skagit #16, Day Creek	1	0	0	1	\$0
	Skagit #17, Guemes Island	15	0	0	15	\$0
	Skagit #2, McLean Road	228	0	13	241	\$10,000
	Skagit #3, Conway/Cederdale	3	0	0	3	\$0
	Skagit #4, Clear Lake	0	0	0	0	\$0
	Skagit #6, Burlington	30	0	0	30	\$5,000
	Skagit #7, Lake Cavanaugh	9	0	0	9	\$0
	Skagit #9, Big Lake	116	0	32	148	\$0
	Skagit #5, Bow	180	0	0	180	\$65,000
	Skagit #8, Sedro-Woolley/Lyman	111	0	11	122	\$0
Skagit #11, Mount Eric	2	0	0	2	\$0	
Skagit #13, Hope Island/Summit Park	1	0	0	1	\$0	
Skagit #19, Rockport/Marblemount	0	0	0	0	\$0	
Concrete Fire Dept	0	0	0	0	\$0	
<b>Total</b>	7,033	0	115	7,148	\$1,742,029	
<i>Whatcom</i>	Bellingham Fire Dept	13,275	0	16	13,291	\$1,070,259
	Lynden Fire Dept	849	0	12	861	\$42,250
	Whatcom #10, Bellingham	0	0	0	0	\$0
	Whatcom #14, Sumas	679	0	8	687	\$0
	Whatcom #17, Sandy Point	0	0	0	0	\$0
	Whatcom #4, Bellingham	441	0	9	450	\$0
	Whatcom #5, Point Roberts	135	0	1	136	\$751,200
	Whatcom #7, Ferndale	1,392	0	37	1,429	\$62,250
	Whatcom #8, Marietta	729	0	12	741	\$214,055
	Whatcom #9, Lake Samish	0	0	0	0	\$0
	Whatcom #1, Everson/Deming/Nooksack	1	0	1	2	\$0
	Whatcom #2, Geneva/Sudden Valley	222	0	24	246	\$75,000
	Whatcom #3, North Whatcom	337	0	4	341	\$225,000
	Whatcom #6, Chuckanut Drive	64	0	9	73	\$45,000
	Whatcom #11, Lummi Island	34	0	0	34	\$0
	Whatcom #13, North Whatcom	573	0	5	578	\$125,000
	Whatcom #16, Acme/Van Zandt	23	0	1	24	\$117,000
	Whatcom #18, South Lake Whatcom	0	0	0	0	\$0
	Whatcom #19, Glacier Fire & Rescue	0	0	0	0	\$0
<b>Total</b>	18,754	0	139	18,893	\$2,727,014	
<b>Regional Total</b>	30,305	5	811	31,121	\$6,112,888	



## Region 4

King, Pierce, and Snohomish counties are part of Region 4. In 2004, 87% of the fire agencies submitted incident data to the Office of the State Fire Marshal.



### Incidents by Category

<i>Incident Category</i>	<i>Number of Incidents</i>	<i>% of Incidents</i>	<i>Dollar Loss</i>	<i>% of Dollar Loss</i>
Fire	12,014	5%	\$63,067,963	99%
Overpressure, Rupture, Explosion, Overheat	806	0%	\$219,670	0%
Rescue & Emergency Medical Service	152,965	64%	\$121,850	0%
Hazardous Condition (No Fire)	6,949	3%	\$100,620	0%
Service Calls	18,715	8%	\$201,825	0%
Good Intent Calls	19,277	8%	\$500	0%
False Alarm & False Calls	5,690	2%	\$3,050	0%
Fire Protection System Malfunction	7,479	3%	\$18,000	0%
Unintentional False Protection System Activation	11,886	5%	\$91,175	0%
Severe Weather & Natural Disaster	244	0%	\$80,000	0%
Other Types of Incidents	2,058	1%	\$0	0%
Undetermined	238	0%	\$0	0%
<b>Total</b>	<b>238,321</b>	<b>100%</b>	<b>\$63,904,653</b>	<b>100%</b>

Sorted by Dollar Loss.  
Excludes mutual aid incidents.

### Fire Incidents by Category

<i>Fire Categories</i>	<i>Number of Incidents</i>	<i>% of Incidents</i>	<i>Dollar Loss</i>	<i>% of Dollar Loss</i>
Structures (including confined fires)	3,757	31%	\$57,205,376	91%
Vehicle Fire	2,322	19%	\$4,933,473	8%
Fixed Mobile Property	111	1%	\$494,315	1%
Fire Other	601	5%	\$315,740	1%
Outside Storage & Equipment	730	6%	\$76,760	0%
Outside Rubbish	1,839	15%	\$22,321	0%
Natural Vegetation	2,638	22%	\$19,978	0%
Cultivated Vegetation	16	0%	\$0	0%
<b>Grand Total</b>	<b>12,014</b>	<b>100%</b>	<b>\$63,067,963</b>	<b>100%</b>

Sorted by Dollar Loss.

### Confined Fires

<i>Confined Fire Type</i>	<i>Number of Incidents</i>	<i>% of Total Number of Incidents</i>	<i>Dollar Loss</i>	<i>% of Total Dollar Loss</i>
Cooking fire, confined to container	953	55%	\$101,457	45%
Trash or rubbish fire, contained	394	23%	\$65,028	29%
Commercial Compactor fire, confined to rubbish	13	1%	\$28,200	13%
Chimney or flue fire, confined to chimney or flue	339	20%	\$15,600	7%
Incinerator overload or malfunction, fire confined	11	1%	\$8,000	4%
Fuel burner/boiler malfunction, fire confined	26	1%	\$6,720	3%
<b>Total</b>	<b>1,736</b>	<b>100%</b>	<b>\$225,005</b>	<b>100%</b>

These incidents are included in the fire counts listed above. Confined fires do not require area of origin or heat sources to be documented.

## Region 4

### *Fires by: Property Use*

<i>Property Category</i>	<i>Number of Incidents</i>	<i>% of Total Incidents</i>	<i>Dollar Loss</i>	<i>% of Total Dollar Loss</i>
Residential	4,652	39%	\$39,212,820	62%
Manufacturing and Processing	106	1%	\$10,302,842	16%
Outside or Special Properties	4,683	39%	\$3,581,344	6%
Mercantile and Business	493	4%	\$3,270,882	5%
Assembly	260	2%	\$2,809,367	4%
Storage	219	2%	\$2,123,307	3%
Other Property Use	378	3%	\$891,331	1%
Health Care, Detention, and Corrections	97	1%	\$403,966	1%
Industrial, Utility, Defense, Agriculture, Mining	106	1%	\$255,184	0%
Educational	246	2%	\$104,508	0%
None	45	0%	\$79,000	0%
Undetermined	729	6%	\$33,412	0%
<b>Grand Total</b>	<b>12,014</b>	<b>100%</b>	<b>\$63,067,963</b>	<b>100%</b>

Sorted by dollar loss.

### *Area of Origin*

<i>Area of Origin</i>	<i>Number of Incidents</i>	<i>% of Total Incidents</i>	<i>Dollar Loss</i>	<i>% of Dollar Loss</i>
Common/Functional Area	987	15%	\$19,660,081	31%
Undetermined	335	5%	\$13,137,615	21%
Structural Area	401	6%	\$7,545,748	12%
Storage Area	287	4%	\$6,564,878	11%
Vehicle Area	2,087	32%	\$5,736,283	9%
Means of Egress	99	2%	\$3,224,985	5%
Assembly Or Sales	102	2%	\$2,003,220	3%
Service Or Equipment Area	125	2%	\$1,954,507	3%
Outside Area	1,984	30%	\$1,528,007	2%
Technical Processing Area	26	0%	\$796,472	1%
Other Areas	108	2%	\$266,270	0%
<b>Total</b>	<b>6,541</b>	<b>100%</b>	<b>\$62,418,066</b>	<b>100%</b>

Sorted by Dollar Loss.

### *Heat Source*

<i>Heat Source Category</i>	<i>Number of Incidents</i>	<i>% of Total Incidents</i>	<i>Total Dollar Loss</i>	<i>% of Total Dollar Loss</i>
Undetermined	1,931	30%	\$26,246,002	42%
Operating Equipment	2,055	31%	\$18,560,760	30%
Hot or Smoldering Object	794	12%	\$4,690,110	8%
Smoking Materials	572	9%	\$3,812,844	6%
Candles	115	2%	\$2,666,821	4%
Chemical or Natural	67	1%	\$2,092,555	3%
Explosives & Fireworks	354	5%	\$1,249,216	2%
Matches & Lighters	346	5%	\$1,227,193	2%
Heat Source Other	183	3%	\$1,001,415	2%
Heat from another	0	0%	\$359,250	1%
Multiple Heat Sources	48	1%	\$356,500	1%
Flares, Fuses, & Torches	76	1%	\$155,400	0%
<b>Total</b>	<b>6,541</b>	<b>100%</b>	<b>\$62,418,066</b>	<b>100%</b>

## Region 4 Incident Summary

<i>County</i>	<i>Fire Agency Name</i>	<i>Number of Incidents</i>	<i>Exposures</i>	<i>Mutual or Automatic Aid Given</i>	<i>Total Incident Reports</i>	<i>Dollar Loss</i>
<i>King</i>	Auburn Fire Dept	7,650	0	110	7,760	\$1,359,825
	Bellevue Fire Dept	12,922	1	3,833	16,756	\$6,269,838
	Black Diamond Fire Dept	57	0	6	63	\$111,900
	Bothell Fire Dept	4,070	0	333	4,403	\$300,700
	Enumclaw/King #28	157	0	0	157	\$0
	Kent Fire Dept	12,670	0	481	13,151	\$281,348
	King #11, North Highline	4,573	0	209	4,782	\$1,369,540
	King #2, Burien	853	0	116	969	\$517,995
	King #26, Des Moines	523	1	105	629	\$887,200
	King #27, Fall City	1	0	29	30	\$0
	King #34, Redmond	0	0	0	0	\$0
	King #39, Federal Way	10,930	4	364	11,298	\$886,450
	King #4, Shoreline	7,632	5	268	7,905	\$869,152
	King #40, Spring Glen	2,458	6	350	2,814	\$1,522,685
	King #43, Maple Valley	2,753	0	137	2,890	\$395,850
	King #44, Mountain View	1,732	0	137	1,869	\$405,000
	King #45, Duvall	365	2	46	413	\$378,000
	King #47, Kangley/Palmer	71	0	19	90	\$0
	Kirkland Fire Dept	6,637	1	695	7,333	\$2,673,225
	Mercer Island Fire Dept	2,114	0	25	2,139	\$254,100
	Pacific Fire Dept	9	0	25	34	\$0
	Redmond Fire Dept	5,019	0	1,068	6,087	\$199,905
	Renton Fire Dept	8,716	9	253	8,978	\$1,231,159
	SeaTac Fire Dept	3,582	0	476	4,058	\$813,900
	Seattle Fire Dept	15,496	0	1	15,497	\$17,340,775
	Snoqualmie Fire Dept	489	0	23	512	\$286,200
	Tukwila Fire Dept	1,805	3	130	1,938	\$1,151,636
	Woodinville Fire & LifeSafety	1,745	0	383	2,128	\$325,035
	Eastside Fire & Rescue	8,128	0	683	8,811	\$62,000
	King #13, Vashon Island Fire & Rescue	1,330	0	3	1,333	\$0
	King #16, Northshore Fire Dept	2,807	1	380	3,188	\$765,700
	King #20, Skyway/Bryn Mawr/Lakeridge	810	0	37	847	\$0
	King #50, Skykomish/Stevens Pass	328	0	1	329	\$227,200
King #51, Snoqualmie Pass Fire & Rescue	243	0	20	263	\$0	
	<b>Total</b>	<b>128,675</b>	<b>33</b>	<b>10,746</b>	<b>139,454</b>	<b>\$40,886,318</b>
<i>Pierce</i>	Buckley Fire Dept	705	0	45	750	\$6,000
	Carbonado Fire Dept	31	0	27	58	\$0
	Dupont Fire Dept	330	0	16	346	\$38,135
	Eatonville Fire Dept	250	0	100	350	\$0
	McNeil Island Fire Dept	711	0	0	711	\$475
	Milton Fire Dept	646	0	49	695	\$58,200
	Orting Fire Dept	586	0	0	586	\$269,900
	Pierce #1, Sumner	183	0	46	229	\$200,000
	Pierce #11, North Puyallup	106	0	2	108	\$0
	Pierce #15, South Pierce	243	0	53	296	\$299,500
	Pierce #16, Key Peninsula	1,276	0	32	1,308	\$169,425
	Pierce #17, Roy/McKenna	1	0	1	2	\$0
	Pierce #18, Orting	0	0	0	0	\$0
	Pierce #2, Lakewood	6,480	1	45	6,526	\$1,073,100
	Pierce #21, Graham	3,403	0	386	3,789	\$238,000
	Pierce #23, Elbe/Ashford	218	0	3	221	\$240,500
	Pierce #25, CrystalMountain	0	0	0	0	\$0
	Pierce #26, Greenwater	8	0	6	14	\$0
	Pierce #27, Anderson Island	0	0	0	0	\$0
	Pierce #3, University Place	2,876	0	48	2,924	\$410,500
Pierce #5, Gig Harbor	4,437	0	136	4,573	\$475,560	
Pierce #6, Central Pierce	13,257	1	417	13,675	\$2,943,850	

## Region 4 Incident Summary

County	Fire Agency Name	Number of		Mutual or Automatic Aid Given	Total Incident Reports	Dollar Loss
		Incidents	Exposures			
<i>Pierce Continued</i>	Pierce #8, Edgewood	607	0	85	692	\$13,000
	Puyallup Fire Dept	5,178	0	207	5,385	\$243,775
	Riverside Fire & Rescue	380	0	61	441	\$80,150
	Ruston Fire Dept	68	1	0	69	\$791,000
	Steilacoom Fire Dept	414	0	27	441	\$148,630
	Sumner Fire Dept	1,938	1	162	2,101	\$170,000
	Tacoma Fire Dept	34,079	3	0	34,082	\$9,250,340
	Pierce #13, Brown's Point/Dash Point	0	0	0	0	\$0
	Pierce #22, East Pierce Fire & Rescue	3,566	0	238	3,804	\$815,150
<b>Total</b>	81,977	7	2,192	84,176	\$17,935,190	
<i>Snohomish</i>	Arlington Fire Dept	1,709	0	970	2,679	\$218,000
	Darrington Fire Dept	16	0	0	16	\$0
	Edmonds Fire Dept	0	0	2	2	\$0
	Everett Fire Dept	2,464	0	10	2,474	\$22,800
	Lynnwood Fire Dept	0	0	2	2	\$0
	Marysville Fire Dept	7,517	0	254	7,771	\$674,050
	Monroe/Snohomish #3	119	0	4	123	\$500
	Snohomish #1	11,854	0	1,083	12,937	\$505,880
	Snohomish #10, Bothell	0	0	0	0	\$0
	Snohomish #14, Stanwood	954	0	196	1,150	\$22,000
	Snohomish #18, Bryant	90	0	81	171	\$0
	Snohomish #19, Silvana	0	0	0	0	\$0
	Snohomish #21, Arlington	0	0	0	0	\$0
	Snohomish #22, Getchell	0	0	0	0	\$0
	Snohomish #23, Robe Valley	3	0	0	3	\$0
	Snohomish #25, Oso	14	0	3	17	\$0
	Snohomish #26, Gold Bar	37	0	34	71	\$415,600
	Snohomish #27, Hat Island	0	0	0	0	\$0
	Snohomish #28, Index	101	0	26	127	\$550,000
	Snohomish #4, Snohomish	0	0	0	0	\$0
	Snohomish #7, Clearview	69	0	1	70	\$1,046,775
	Stanwood Fire Dept	853	0	45	898	\$0
	Snohomish #5, Sultan/Startup	44	0	1	45	\$21,000
	Snohomish #8, Lake Stevens	102	0	2	104	\$89,100
	Snohomish #15, Tulalip Bay	0	0	0	0	\$0
	Snohomish #16, Lake Roesiger	9	0	0	9	\$17,000
	Snohomish #17, Granite Falls	1,344	0	102	1,446	\$702,100
	Snohomish/Skagit #24, Darrington Fire Dept	4	0	0	4	\$0
	Snohomish Co Fire Marshal's Office	2	0	258	260	\$0
	Mount Lake Terrace Fire Dept	22	0	0	22	\$0
Mukilteo Fire Dept	342	0	8	350	\$798,340	
<b>Total</b>	27,669	0	3,082	30,751	\$5,083,145	
<b>Regional Total</b>	238,321	40	16,020	254,381	\$63,904,653	

## Region 5

Clark, Cowlitz, Lewis, Skamania, and Wahkiakum counties are part of Region 5. In 2004, 84% of the fire agencies reported incident data to the Office of the State Fire Marshal.



### Incidents by Category

Incident Category	Number of Incidents	% of Incidents	Dollar Loss	% of Dollar Loss
Fire	1,962	6%	\$6,995,951	96%
Good Intent Calls	4,808	14%	\$103,000	1%
Hazardous Condition (No Fire)	705	2%	\$63,600	1%
Service Calls	1,335	4%	\$52,300	1%
Severe Weather & Natural Disaster	10	0%	\$50,000	1%
Rescue & Emergency Medical Service	23,404	68%	\$22,550	0%
Fire Protection System Malfunction	584	2%	\$3,000	0%
False Alarm & False Calls	841	2%	\$1,500	0%
Unintentional False Protection System Activation	669	2%	\$500	0%
Overpressure, Rupture, Explosion, Overheat	74	0%	\$180	0%
Other Types of Incidents	74	0%	\$0	0%
Undetermined	3	0%	\$0	0%
<b>Total</b>	<b>34,469</b>	<b>100%</b>	<b>\$7,292,581</b>	<b>100%</b>

Sorted by Dollar Loss.  
Excludes mutual aid incidents.

### Fire Incidents by Category

Fire Categories	Number of Incidents	% of Incidents	Dollar Loss	% of Dollar Loss
Structures (including confined fires)	555	28%	\$5,721,921	82%
Vehicle	400	20%	\$700,565	10%
Fixed Mobile Property	33	2%	\$463,050	7%
Fire Other	184	9%	\$58,550	1%
Outside Storage & Equipment	87	4%	\$30,200	0%
Natural Vegetation	455	23%	\$10,860	0%
Outside Rubbish	243	12%	\$10,805	0%
Cultivated Vegetation	5	0%	\$0	0%
<b>Total</b>	<b>1,962</b>	<b>100%</b>	<b>\$6,995,951</b>	<b>100%</b>

Sorted by Dollar Loss.

### Confined Fires

Confined Fire Type	Number of Incidents	% of Total Incidents	Dollar Loss	% of Total Dollar Loss
Chimney or flue fire, confined to chimney or flue	133	45%	\$89,900	77%
Fuel burner/boiler malfunction, fire confined	3	1%	\$20,000	17%
Cooking fire, confined to container	84	29%	\$7,250	6%
Trash or rubbish fire, contained	71	24%	\$50	0%
Commercial Compactor fire, confined to rubbish	1	0%	\$0	0%
Incinerator overload or malfunction, fire confined	1	0%	\$0	0%
<b>Total</b>	<b>293</b>	<b>100%</b>	<b>\$117,200</b>	<b>100%</b>

These incidents are included in the fire counts listed above. Confined fires do not require area of origin or heat sources to be documented.

## Region 5

### *Fires by: Property Use*

<i>Property Category</i>	<i>Number of Incidents</i>	<i>% of Total Incidents</i>	<i>Dollar Loss</i>	<i>% of Total Dollar Loss</i>
Residential	755	39%	\$5,261,686	75%
Outside or Special Properties	801	41%	\$597,605	9%
Storage	52	3%	\$375,800	5%
Mercantile and Business	68	3%	\$281,110	4%
None	77	4%	\$152,050	2%
Assembly	34	2%	\$98,500	1%
Manufacturing and Processing	29	1%	\$88,000	1%
Industrial, Utility, Defense, Agriculture, Mining	27	1%	\$60,050	1%
Educational	28	1%	\$35,500	1%
Other Property Use	44	2%	\$28,550	0%
Undetermined	33	2%	\$17,100	0%
Health Care, Detention, and Corrections	9	0%	\$0	0%
<b>Grand Total</b>	<b>1,957</b>	<b>100%</b>	<b>\$6,995,951</b>	<b>100%</b>

Sorted by dollar loss.

### *Area of Origin*

<i>Area of Origin</i>	<i>Number of Incidents</i>	<i>% of Total Incidents</i>	<i>Total Dollar Loss</i>	<i>% of Total Dollar Loss</i>
Common/Functional Area	166	12%	\$2,388,866	36%
Structural Area	60	4%	\$1,358,800	20%
Undetermined	140	10%	\$639,260	10%
Vehicle Area	332	24%	\$627,955	9%
Storage Area	66	5%	\$538,000	8%
Assembly Or Sales	15	1%	\$406,730	6%
Service Or Equipment Area	45	3%	\$365,400	5%
Outside Area	485	36%	\$159,870	2%
Technical Processing Area	5	0%	\$100,000	1%
Means of Egress	13	1%	\$70,500	1%
Other Areas	35	3%	\$16,550	0%
<b>Grand Total</b>	<b>1,362</b>	<b>100%</b>	<b>\$6,671,931</b>	<b>100%</b>

Sorted by Dollar Loss.

### *Heat Source*

<i>Heat Source Category</i>	<i>Number of Incidents</i>	<i>% of Total Incidents</i>	<i>Total Dollar Loss</i>	<i>% of Total Dollar Loss</i>
Undetermined	580	43%	\$2,710,905	41%
Operating Equipment	272	20%	\$2,084,726	31%
Smoking Materials	84	6%	\$571,200	9%
Hot or Smoldering Object	157	12%	\$390,755	6%
Flares, Fusees, & Torches	30	2%	\$370,320	6%
Heat Source Other	99	7%	\$244,225	4%
Candles	21	2%	\$219,050	3%
Matches & Lighters	45	3%	\$78,150	1%
Explosives & Fireworks	56	4%	\$2,500	0%
Chemical or Natural	16	1%	\$100	0%
Multiple Heat Sources	2	0%	\$0	0%
<b>Total</b>	<b>1,362</b>	<b>100%</b>	<b>\$6,671,931</b>	<b>100%</b>

Sorted by dollar loss.

Includes heat sources reported in the Fire Module.

## Region 5 Incident Summary

County	Fire Agency Name	Number of Incidents	Exposures	Mutual or Automatic Aid Given	Total Incident Reports	Dollar Loss
Clark	Camas Fire Dept	517	0	52	569	\$0
	Clark #1, Washougal	179	0	184	363	\$0
	Clark #10, Amboy	527	0	6	533	\$17,500
	Clark #11, Battle Ground	241	0	0	241	\$20,000
	Clark #12, Ridgefield	925	0	110	1,035	\$311,500
	Clark #13, Yacolt	103	0	9	112	\$0
	Clark #3, Brush Prairie	933	0	76	1,009	\$657,220
	Clark #6, Hazel Dell	4,673	0	113	4,786	\$493,700
	Clark #9, Fern Prairie	401	0	15	416	\$0
	Vancouver Fire Dept	13,764	0	41	13,805	\$1,130,310
Washougal Fire Dept	0	0	0	0	\$0	
<b>Total</b>		22,263	0	606	22,869	\$2,630,230
Cowlitz	Cowlitz #1, Woodland	355	0	17	372	\$211,000
	Cowlitz #2, Kelso	2,853	0	64	2,917	\$1,281,805
	Cowlitz #3, Toutle	35	0	5	40	\$350
	Cowlitz #4, Ryderwood	68	0	0	68	\$0
	Cowlitz #5, Kalama	41	0	15	56	\$150,200
	Longview Fire Dept	4,595	1	12	4,608	\$1,166,895
	Cowlitz #6, Castle Rock Fire Dept	534	1	83	618	\$314,350
	Cowlitz/Skamania #7, Ariel	25	0	0	25	\$435,200
	Woodland Fire Dept/Clark #2	752	0	51	803	\$277,000
<b>Total</b>		9,258	2	247	9,507	\$3,836,800
Lewis	Centralia Fire Dept	1,040	0	47	1,087	\$3,250
	Chehalis Fire Dept	190	0	7	197	\$100,801
	Lewis #1, Onalaska	14	0	1	15	\$5,000
	Lewis #10, Packwood	7	0	0	7	\$23,800
	Lewis #11, Pe Ell	14	0	0	14	\$250
	Lewis #12, Centralia	107	0	5	112	\$0
	Lewis #13, Curtis	0	0	0	0	\$0
	Lewis #14, Randle	162	0	2	164	\$0
	Lewis #15, Winlock	227	0	24	251	\$0
	Lewis #16, Doty/Dryad/Meskill	0	0	0	0	\$0
	Lewis #17, Big Creek	4	0	1	5	\$0
	Lewis #18, Glenoma	0	0	0	0	\$0
	Lewis #2, Toledo	606	0	26	632	\$16,000
	Lewis #3, Mossyrock	16	0	4	20	\$216,800
	Lewis #4, Morton	97	0	0	97	\$130,000
	Lewis #5, Napavine	2	0	0	2	\$0
	Lewis #6, Chehalis	89	0	9	98	\$0
	Lewis #7, Vadar	75	0	8	83	\$0
	Lewis #8, Salkum/Silver Creek	0	0	1	1	\$0
	Lewis #9, Mineral	1	0	0	1	\$0
Morton Fire Dept	127	0	0	127	\$4,300	
Pe Ell Fire Dept	0	0	0	0	\$0	
<b>Total</b>		2,778	0	135	2,913	\$500,201
Skamania	Mill-A Volunteers	0	0	0	0	\$0
	North Bonneville Fire Dept	6	0	1	7	\$150
	Skamania #3, Underwood	25	0	1	26	\$144,400
	Skamania #4, Washougal	36	0	3	39	\$0
	Skamania #5, Skamania	16	0	4	20	\$102,500
	Skamania #6, Cougar	2	0	0	2	\$0
	Skamania #1, Carson	24	0	8	32	\$0
	Stevenson/Skamania #2, Stevenson	46	0	8	54	\$5,300
<b>Total</b>		155	0	25	180	\$252,350
Wahkiakum	Cathlamet Fire Dept	0	0	0	0	\$0
	Wahkiakum #1, Cathlamet	0	0	0	0	\$0
	Wahkiakum #2, Skamokawa	0	0	0	0	\$0
	Wahkiakum #4, Cathlamet	13	0	11	24	\$65,000
	Wahkiakum #3, Grays River	2	0	0	2	\$8,000
<b>Total</b>		15	0	11	26	\$73,000
<b>Regional Total</b>		34,469	2	1,024	35,495	\$7,292,581

## Region 6

Chelan, Douglas, Grant, and Okanogan counties are part of Region 6. In 2004, 52% of the fire agencies submitted incident data to the Office of the State Fire Marshal.



### Incidents by Category

<i>Incident Category</i>	<i>Number of Incidents</i>	<i>% of Incidents</i>	<i>Dollar Loss</i>	<i>% of Dollar Loss</i>
Fire	1,083	19%	\$3,401,727	90%
Overpressure, Rupture, Explosion, Overheat	38	1%	\$20,000	1%
Rescue & Emergency Medical Service	2,845	50%	\$50,400	1%
Hazardous Condition (No Fire)	257	5%	\$3,600	0%
Service Calls	217	4%	\$33,000	1%
Good Intent Calls	684	12%	\$3,000	0%
False Alarm & False Calls	196	3%	\$0	0%
Fire Protection System Malfunction	191	3%	\$14,000	0%
Unintentional False Protection System Activation	149	3%	\$0	0%
Severe Weather & Natural Disaster	13	0%	\$244,000	6%
Other Types of Incidents	31	1%	\$0	0%
<b>Total</b>	<b>5,704</b>	<b>100%</b>	<b>\$3,769,727</b>	<b>100%</b>

Sorted by Dollar Loss.  
Excludes mutual aid incidents.

### Fire Incidents by Category

<i>Fire Categories</i>	<i>Number of Incidents</i>	<i>% of Incidents</i>	<i>Dollar Loss</i>	<i>% of Dollar Loss</i>
Structures (including confined fires)	274	25%	\$2,319,877	68%
Vehicle	168	16%	\$333,080	10%
Fire Other	53	5%	\$298,650	9%
Natural Vegetation	408	38%	\$204,400	6%
Cultivated Vegetation	26	2%	\$183,370	5%
Fixed Mobile Property	20	2%	\$59,050	2%
Outside Rubbish	90	8%	\$2,200	0%
Outside Storage & Equipment	44	4%	\$1,100	0%
<b>Total</b>	<b>1,083</b>	<b>100%</b>	<b>\$3,401,727</b>	<b>100%</b>

Sorted by Dollar Loss.

### Confined Fires

<i>Confined Fire Type</i>	<i>Number of Incidents</i>	<i>% of Total</i>	
		<i>Number of Incidents</i>	<i>Dollar Loss</i>
Cooking fire, confined to container	38	36%	\$1,150
Chimney or flue fire, confined to chimney or flue	36	34%	\$0
Trash or rubbish fire, contained	31	29%	\$0
Incinerator overload or malfunction, fire confined	1	1%	\$0
<b>Total</b>	<b>106</b>	<b>100%</b>	<b>\$1,150</b>

These incidents are included in the fire counts listed above. Confined fires do not require area of origin or heat sources to be documented.



## Region 6

### *Fires by: Property Use*

<i>Property Category</i>	<i>Number of Incidents</i>	<i>% of Total Incidents</i>	<i>Dollar Loss</i>	<i>% of Total Dollar Loss</i>
Residential	283	26%	\$2,262,060	66%
Industrial, Utility, Defense, Agriculture, Mining	77	7%	\$507,920	15%
Storage	41	4%	\$329,500	10%
Outside or Special Properties	537	50%	\$166,080	5%
Mercantile and Business	32	3%	\$104,200	3%
Assembly	27	3%	\$18,767	1%
Manufacturing and Processing	11	1%	\$6,200	0%
None	20	2%	\$5,000	0%
Other Property Use	27	3%	\$1,500	0%
Educational	11	1%	\$500	0%
Health Care, Detention, and Corrections	5	0%	\$0	0%
Undetermined	7	1%	\$0	0%
<b>Total</b>	<b>1,078</b>	<b>100%</b>	<b>\$3,401,727</b>	<b>100%</b>

Sorted by dollar loss.

### *Area of Origin*

<i>Area of Origin</i>	<i>Number of Incidents</i>	<i>% of Total Incidents</i>	<i>Dollar Loss</i>	<i>% of Dollar Loss</i>
Common/Functional Area	62	11%	\$890,150	31%
Storage Area	27	5%	\$507,500	18%
Vehicle Area	132	22%	\$432,480	15%
Undetermined	70	12%	\$425,600	15%
Outside Area	203	34%	\$220,720	8%
Assembly Or Sales	7	1%	\$195,600	7%
Structural Area	47	8%	\$172,500	6%
Means of Egress	7	1%	\$30,010	1%
Service Or Equipment Area	19	3%	\$24,367	1%
Other Areas	13	2%	\$0	0%
Technical Processing Area	3	1%	\$0	0%
<b>Total</b>	<b>590</b>	<b>100%</b>	<b>\$2,898,927</b>	<b>100%</b>

Sorted by Dollar Loss.

### *Heat Source*

<i>Heat Source Category</i>	<i>Number of Incidents</i>	<i>% of Total Incidents</i>	<i>Total Dollar Loss</i>	<i>% of Total Dollar Loss</i>
Undetermined	232	39%	\$1,209,800	42%
Operating Equipment	147	25%	\$1,208,100	42%
Candles	6	1%	\$272,000	9%
Hot or Smoldering Object	57	10%	\$80,200	3%
Matches & Lighters	25	4%	\$71,600	2%
Smoking Materials	34	6%	\$34,117	1%
Explosives & Fireworks	30	5%	\$12,300	0%
Heat from another	1	0%	\$7,800	0%
Heat Source Other	40	7%	\$3,000	0%
Chemical or Natural	10	2%	\$0	0%
Flares, Fusees, & Torches	7	1%	\$0	0%
Multiple Heat Sources	1	0%	\$0	0%
<b>Total</b>	<b>590</b>	<b>100%</b>	<b>\$2,898,917</b>	<b>100%</b>

Sorted by dollar loss.

Includes heat sources reported in the Fire Module.

## Region 6 Incident Summary

<i>County</i>	<i>Fire Agency Name</i>	<i>Number of Incidents</i>	<i>Exposures</i>	<i>Mutual or Automatic Aid Given</i>	<i>Total Incident Reports</i>	<i>Dollar Loss</i>
<i>Chelan</i>	Cashmere Fire Dept	96	0	23	119	\$0
	Chelan #1, Wenatchee	288	0	86	374	\$47,500
	Chelan #3, Leavenworth	87	0	412	499	\$251,000
	Chelan #4, Ponderosa	4	0	0	4	\$3,000
	Chelan #5, Manson	52	0	52	104	\$13,550
	Chelan #7, Chelan/Chelan Falls	112	0	23	135	\$5,000
	Chelan #8, Entiat	0	0	0	0	\$0
	Wenatchee Fire Dept	1,829	6	128	1,963	\$1,097,300
	Chelan #6, Monitor/Dryden/Cashmere/Peshastin/Blewett Pass	158	0	1	159	\$26,600
	Chelan #9, Lake Wenatchee/Plain	0	0	0	0	\$0
<i>Total</i>		2,626	6	725	3,357	\$1,443,950
<i>Douglas</i>	Bridgeport FireDept/Ambulance	8	0	0	8	\$295,600
	Douglas #1, Waterville	32	0	7	39	\$0
	Douglas #2, East Wenatchee/Rock Island	737	0	82	819	\$67,100
	Douglas #3, Grand Coulee	12	0	0	12	\$0
	Douglas #4, Orondo	0	0	0	0	\$0
	Douglas #5, Mansfield	28	0	3	31	\$21,000
	Douglas #6, Brewster	0	0	0	0	\$0
	Douglas #7, Bridgeport	0	0	0	0	\$0
	Douglas #8, Coulee City	0	0	0	0	\$0
<i>Total</i>		817	0	92	909	\$383,700
<i>Grant</i>	Coulee City Fire Dept	23	0	12	35	\$0
	Electric City Fire Dept	20	0	8	28	\$0
	Ephrata Fire Dept	216	0	23	239	\$30,010
	Grand Coulee Fire Dept	0	0	0	0	\$0
	Grant #10, Royal Slope	89	0	13	102	\$368,800
	Grant #12, Wilson Creek	0	0	0	0	\$0
	Grant #13, Ephrata	73	0	35	108	\$0
	Grant #14, Electric City	0	0	0	0	\$0
	Grant #15, Mose Lake	0	0	0	0	\$0
	Grant #3, Quincy	363	0	9	372	\$0
	Grant #5, Moses Lake	0	0	0	0	\$0
	Grant #6, Hartline	4	0	1	5	\$0
	Grant #7, Soap Lake	164	0	9	173	\$0
	Grant #8, Mattawa	283	0	31	314	\$180,370
	Hartline Fire Dept	0	0	0	0	\$0
	Krupp/Marlin Fire Dept	0	0	0	0	\$0
	Moses Lake Fire Dept	315	4	0	319	\$254,750
	Quincy Fire Dept	111	0	0	111	\$0
Soap Lake Fire Dept	0	0	0	0	\$0	
Grant #4, Warden	0	0	0	0	\$0	
Grant #11, East Royal Slope	0	0	0	0	\$0	
<i>Total</i>		1,661	4	141	1,806	\$833,930

## Region 6 Incident Summary

<i>County</i>	<i>Fire Agency Name</i>	<i>Number of Incidents</i>	<i>Exposures</i>	<i>Mutual or Automatic Aid Given</i>	<i>Total Incident Reports</i>	<i>Dollar Loss</i>
<i>Okanogan</i>	Coulee Dam Fire Dept	0	0	0	0	\$0
	Nespelem Fire Dept	0	0	0	0	\$0
	Okanogan #10, Loomis	0	0	0	0	\$0
	Okanogan #11, Molson/Chesaw	0	0	0	0	\$0
	Okanogan #12, Tonasket	2	0	0	2	\$0
	Okanogan #2, Elmer City	0	0	0	0	\$0
	Okanogan #3, Malott	69	0	8	77	\$0
	Okanogan #4, Tonasket	0	0	0	0	\$0
	Okanogan #7, Riverside	0	0	0	0	\$0
	Okanogan #8, Okanogan	0	0	0	0	\$0
	Okanogan Fire Dept	111	1	58	170	\$130,000
	Omak Fire Dept	244	0	41	285	\$767,830
	Pateros Fire Dept	0	0	0	0	\$0
	Twisp Fire Dept	15	0	50	65	\$0
	Winthrop Fire Dept	0	0	0	0	\$0
	Okanogan #5, Brewster/Pateros/Methow	89	0	16	105	\$6,000
	Okanogan#6, Carlton/Twisp/ Winthrop/Mazama	10	0	13	23	\$0
	Okanogan #9, Rural Conconully	0	0	0	0	\$0
	Brewster Fire Dept	0	0	0	0	\$0
	Oroville Fire Dept/Okanogan #1	60	0	5	65	\$204,317
Conconully Fire Dept	0	0	0	0	\$0	
<i>Total</i>		600	1	191	792	\$1,108,147
<i>Regional Total</i>		5,704	11	1,149	6,864	\$3,769,727

## Region 7

Kittitas, Klickitat, and Yakima counties are part of Region 7. In 2004, 86% of the fire agencies reported incident data to the Office of the State Fire Marshal.



### Incidents by Category

Incident Category	Number of Incidents	% of Incidents	Dollar Loss	% of Dollar Loss
Fire	1,883	10%	\$19,646,856	97%
Service Calls	857	4%	\$285,400	1%
Rescue & Emergency Medical Service	12,575	66%	\$134,000	1%
Hazardous Condition (No Fire)	537	3%	\$58,450	0%
Unintentional False Protection System Activation	405	2%	\$50,000	0%
Good Intent Calls	2,216	12%	\$6,850	0%
Overpressure, Rupture, Explosion, Overheat	21	0%	\$2,300	0%
Fire Protection System Malfunction	274	1%	\$100	0%
False Alarm & False Calls	327	2%	\$0	0%
Other Types of Incidents	68	0%	\$0	0%
Undetermined	10	0%	\$0	0%
Severe Weather & Natural Disaster	9	0%	\$0	0%
<b>Total</b>	<b>19,182</b>	<b>100%</b>	<b>\$20,183,956</b>	<b>100%</b>

Sorted by Dollar Loss.  
Excludes mutual aid incidents.

### Fire Incidents by Category

Fire Categories	Number of Incidents	% of Incidents	Dollar Loss	% of Dollar Loss
Structures (including confined fires)	552	29%	\$17,088,502	87%
Vehicle	368	20%	\$1,544,222	8%
Natural Vegetation	609	32%	\$360,989	2%
Fixed Mobile Property	24	1%	\$318,511	2%
Cultivated Vegetation	28	1%	\$229,625	1%
Outside Storage & Equipment	51	3%	\$61,685	0%
Outside Rubbish	161	9%	\$32,467	0%
Fire Other	90	5%	\$10,855	0%
<b>Total</b>	<b>1,883</b>	<b>100%</b>	<b>\$19,646,856</b>	<b>100%</b>

Sorted by Dollar Loss.

### Confined Fires

Confined Fire Type	Number of Incidents	% of Total Number of Incidents	Dollar Loss	% of Total Dollar Loss
Cooking fire, confined to container	92	41%	\$14,022	45%
Chimney or flue fire, confined to chimney or flue	61	27%	\$11,905	38%
Trash or rubbish fire, contained	62	28%	\$5,455	17%
Fuel burner/boiler malfunction, fire confined	8	4%	\$0	0%
Commercial Compactor fire, confined to rubbish	1	0%	\$0	0%
Incinerator overload or malfunction, fire confined	1	0%	\$0	0%
<b>Total</b>	<b>225</b>	<b>100%</b>	<b>\$31,382</b>	<b>100%</b>

These incidents are included in the fire counts listed above. Confined fires do not require area of origin or heat sources to be documented.

## Region 7

### *Fires by: Property Use*

Property Category	Number of Incidents	% of Total Incidents	Dollar Loss	% of Total Dollar Loss
Residential	594	32%	\$8,260,139	42%
Storage	80	4%	\$5,162,161	26%
Outside or Special Properties	970	52%	\$1,854,390	9%
Mercantile and Business	29	2%	\$1,652,940	8%
Manufacturing and Processing	22	1%	\$920,225	5%
Educational	25	1%	\$828,188	4%
Assembly	26	1%	\$778,796	4%
Industrial, Utility, Defense, Agriculture, Mining	68	4%	\$170,537	1%
Other Property Use	21	1%	\$9,405	0%
Undetermined	8	0%	\$6,000	0%
Health Care, Detention, and Corrections	18	1%	\$2,175	0%
None	20	1%	\$1,900	0%
<b>Total</b>	<b>1,881</b>	<b>100%</b>	<b>\$19,646,856</b>	<b>100%</b>

Sorted by dollar loss.

### *Area of Origin*

Area of Origin	Number of Incidents	% of Total Incidents	Dollar Loss	% of Dollar Loss
Storage Area	59	6%	\$4,334,129	23%
Structural Area	68	7%	\$3,224,480	17%
Service Or Equipment Area	32	3%	\$3,071,825	16%
Common/Functional Area	141	14%	\$2,260,160	12%
Outside Area	196	20%	\$1,440,679	8%
Vehicle Area	280	28%	\$1,371,647	7%
Assembly Or Sales	29	3%	\$1,015,400	5%
Undetermined	134	13%	\$830,775	4%
Other Areas	41	4%	\$669,531	4%
Technical Processing Area	7	1%	\$636,633	3%
Means of Egress	8	1%	\$217,150	1%
<b>Total</b>	<b>995</b>	<b>100%</b>	<b>\$19,072,409</b>	<b>100%</b>

Sorted by Dollar Loss.

### *Heat Source*

Heat Source Category	Number of Incidents	% of Total Incidents	Total Dollar Loss	% of Total Dollar Loss
Undetermined	417	42%	\$10,458,041	55%
Operating Equipment	280	28%	\$4,206,803	22%
Hot or Smoldering Object	91	9%	\$1,607,570	8%
Heat Source Other	45	5%	\$1,450,175	8%
Smoking Materials	41	4%	\$378,280	2%
Explosives & Fireworks	31	3%	\$342,865	2%
Multiple Heat Sources	7	1%	\$288,400	2%
Candles	9	1%	\$137,050	1%
Matches & Lighters	37	4%	\$80,025	0%
Chemical or Natural	16	2%	\$59,450	0%
Heat from another	0	0%	\$54,600	0%
Flares, Fusees, & Torches	21	2%	\$9,150	0%
<b>Total</b>	<b>995</b>	<b>100%</b>	<b>\$19,072,409</b>	<b>100%</b>

Sorted by dollar loss.

Includes heat sources reported in the Fire Module.

## Region 7 Incident Summary

<i>County</i>	<i>Fire Agency Name</i>	<i>Number of Incidents</i>	<i>Exposures</i>	<i>Mutual or Automatic Aid Given</i>	<i>Total Incident Reports</i>	<i>Dollar Loss</i>
Kittitas	Cle Elum Fire Dept	41	0	8	49	\$145,000
	Ellensburg Fire Dept	2,031	0	20	2,051	\$242,000
	Kittitas #1, Thorp	43	0	8	51	\$20,025
	Kittitas #2, Ellensburg	200	0	47	247	\$0
	Kittitas #3, Easton	21	0	6	27	\$500,000
	Kittitas #4, Vantage	10	0	3	13	\$0
	Kittitas #6, Lake Cle Elum	14	0	0	14	\$0
	Kittitas #8, Lake Kachess	12	0	1	13	\$0
	Kittitas Fire Dept	4	0	8	12	\$0
	Roslyn Fire Dept	12	0	3	15	\$125,400
	Kittitas #7, South Cle Elum	320	0	35	355	\$592,200
South Cle Elum Fire Dept	1	0	0	1	\$0	
	<b>Total</b>	2,709	0	139	2,848	\$1,624,625
Klickitat	Bingen Fire Dept	19	0	1	20	\$100,000
	Goldendale Fire Dept	68	0	0	68	\$391,900
	Klickitat #11, Wishram	2	0	0	2	\$0
	Klickitat #1, Trout Lake	0	0	0	0	\$0
	Klickitat #10, Alderdale	0	0	0	0	\$0
	Klickitat #12, Klickitat	4	0	0	4	\$0
	Klickitat #13, Appleton	8	0	0	8	\$0
	Klickitat #14, High Prairie	20	0	43	63	\$50
	Klickitat #2, Bickleton	6	0	0	6	\$0
	Klickitat #4, Lyle	58	0	48	106	\$90,800
	Klickitat #5, Centerville	13	0	0	13	\$46,800
	Klickitat #7, Goldendale	79	0	0	79	\$483,850
	Klickitat #8, Glenwood	0	0	0	0	\$0
	Klickitat #9, Roosevelt	3	0	0	3	\$0
	White Salmon Fire Dept	23	0	19	42	\$0
	Klickitat #3, Husum/Cherry Lane	2	0	20	22	\$0
Klickitat #6, Dallesport	0	0	0	0	\$0	
	<b>Total</b>	305	0	131	436	\$1,113,400
Yakima	Grandview Fire Dept	57	0	1	58	\$1,200
	Granger Fire Dept	141	0	0	141	\$40,000
	Mabton Fire Dept	105	0	0	105	\$65,250
	Sunnyside Fire Dept	1,602	4	76	1,682	\$1,634,650
	Tieton Fire Dept	0	0	0	0	\$0
	Toppenish Fire Dept	674	4	150	828	\$2,225,850
	Wapato Fire Dept	13	0	0	13	\$0
	Yakima #12, West Valley	642	0	65	707	\$3,696,550
	Yakima #14, Nile/Cliffdell	0	0	0	0	\$0
	Yakima #2, Selah	962	0	46	1,008	\$951,370
	Yakima #3, Naches	57	0	13	70	\$0
	Yakima #4, Moxee	631	0	26	657	\$1,143,850
	Yakima #5, Zillah	2,324	0	32	2,356	\$2,781,019
	Yakima #6, Glead	51	0	30	81	\$54,900
	Yakima #7, Glade	1	0	0	1	\$0
	Yakima #9, Naches Heights	0	0	0	0	\$0
	Yakima Fire Dept	7,734	18	122	7,874	\$4,569,837
	Zillah Fire Dept	243	0	7	250	\$142,830
	Yakima #1, Cowiche	47	0	35	82	\$0
Union Gap Fire Dept/Yakima #11, Broadway	884	0	47	931	\$138,625	
	<b>Total</b>	16,168	26	650	16,844	\$17,445,931
	<b>Regional Total</b>	19,182	26	920	20,128	\$20,183,956

## Region 8

Adams, Asotin, Benton, Columbia, Garfield, Franklin, Walla Walla, and Whitman counties are part of Region 8. In 2004, 85% of the fire agencies reported incident data to the Office of the State Fire Marshal.



### Incidents by Category

Incident Category	Number of Incidents	% of Incidents	Dollar Loss	% of Dollar Loss
Fire	1,614	8%	\$6,463,118	94%
Service Calls	851	4%	\$266,950	4%
Hazardous Condition (No Fire)	615	3%	\$100,564	1%
Rescue & Emergency Medical Service	12,761	62%	\$51,500	1%
False Alarm & False Calls	455	2%	\$5,000	0%
Good Intent Calls	2,019	10%	\$100	0%
Fire Protection System Malfunction	1,286	6%	\$0	0%
Unintentional False Protection System Activation	919	4%	\$0	0%
Other Types of Incidents	52	0%	\$0	0%
Overpressure, Rupture, Explosion, Overheat	34	0%	\$0	0%
Severe Weather & Natural Disaster	32	0%	\$0	0%
<b>Total</b>	<b>20,638</b>	<b>100%</b>	<b>\$6,887,232</b>	<b>100%</b>

Sorted by Dollar Loss.  
Excludes mutual aid incidents.

### Fire Incidents by Category

Fire Categories	Number of Incidents	% of Incidents	Dollar Loss	% of Dollar Loss
Structures (including confined fires)	479	30%	\$5,915,010	92%
Vehicle	304	19%	\$268,380	4%
Outside Storage & Equipment	52	3%	\$128,951	2%
Fixed Mobile Property	26	2%	\$98,750	2%
Cultivated Vegetation	36	2%	\$20,359	0%
Fire Other	81	5%	\$18,920	0%
Natural Vegetation	424	26%	\$10,850	0%
Outside Rubbish	212	13%	\$1,898	0%
<b>Grand Total</b>	<b>1,614</b>	<b>100%</b>	<b>\$6,463,118</b>	<b>100%</b>

Sorted by Dollar Loss.

### Confined Fires

Confined Fire Type	Number of Incidents	% of Total Number of Incidents	Dollar Loss	% of Total Dollar Loss
Commercial Compactor fire, confined to rubbish	2	1%	\$2,500	46%
Cooking fire, confined to container	114	50%	\$1,810	33%
Fuel burner/boiler malfunction, fire confined	4	2%	\$1,000	18%
Trash or rubbish fire, contained	70	31%	\$150	3%
Chimney or flue fire, confined to chimney or flue	36	16%	\$0	0%
<b>Total</b>	<b>226</b>	<b>100%</b>	<b>\$5,460</b>	<b>100%</b>

These incidents are included in the fire counts listed above. Confined fires do not require area of origin or heat sources to be documented.

## Region 8

### *Fires by: Property Use*

<i>Property Category</i>	<i>Number of Incidents</i>	<i>% of Total Incidents</i>	<i>Dollar Loss</i>	<i>% of Total Dollar Loss</i>
Residential	561	35%	\$4,781,980	74%
Industrial, Utility, Defense, Agriculture, Mining	78	5%	\$659,800	10%
Storage	40	2%	\$408,650	6%
Outside or Special Properties	752	47%	\$228,813	4%
Mercantile and Business	73	5%	\$131,750	2%
Manufacturing and Processing	2	0%	\$128,000	2%
Assembly	42	3%	\$92,125	1%
Health Care, Detention, and Corrections	11	1%	\$27,450	0%
Educational	21	1%	\$4,500	0%
None	10	1%	\$50	0%
Other Property Use	19	1%	\$0	0%
Undetermined	4	0%	\$0	0%
<b>Total</b>	<b>1,613</b>	<b>100%</b>	<b>\$6,463,118</b>	<b>100%</b>

Sorted by dollar loss.

Property use not reported for one incident.

### *Area of Origin*

<i>Area of Origin</i>	<i>Number of Incidents</i>	<i>% of Total Incidents</i>	<i>Dollar Loss</i>	<i>% of Dollar Loss</i>
Common/Functional Area	120	16%	\$1,818,150	32%
Structural Area	57	8%	\$1,056,550	18%
Assembly Or Sales	20	3%	\$863,500	15%
Storage Area	40	5%	\$670,450	12%
Vehicle Area	278	38%	\$468,180	8%
Undetermined	45	6%	\$315,800	5%
Means of Egress	6	1%	\$220,700	4%
Outside Area	139	19%	\$164,551	3%
Technical Processing Area	2	0%	\$128,000	2%
Service Or Equipment Area	16	2%	\$25,100	0%
Other Areas	15	2%	\$11,100	0%
<b>Total</b>	<b>738</b>	<b>100%</b>	<b>\$5,742,081</b>	<b>100%</b>

Sorted by Dollar Loss.

### *Heat Source*

<i>Heat Source Category</i>	<i>Number of Incidents</i>	<i>% of Total Incidents</i>	<i>Total Dollar Loss</i>	<i>% of Total Dollar Loss</i>
Operating Equipment	281	38%	\$1,973,055	34%
Undetermined	213	29%	\$1,953,526	34%
Hot or Smoldering Object	84	11%	\$719,400	13%
Candles	14	2%	\$316,950	6%
Smoking Materials	31	4%	\$306,900	5%
Heat Source Other	37	5%	\$239,350	4%
Matches & Lighters	22	3%	\$102,000	2%
Heat from another	0	0%	\$77,850	1%
Explosives & Fireworks	10	1%	\$30,100	1%
Multiple Heat Sources	4	1%	\$11,000	0%
Flares, Fusees, & Torches	24	3%	\$10,000	0%
Chemical or Natural	18	2%	\$1,950	0%
<b>Total</b>	<b>738</b>	<b>100%</b>	<b>\$5,742,081</b>	<b>100%</b>

Sorted by dollar loss.

Includes heat sources reported in the Fire Module.



## Region 8 Incident Summary

County	Fire Agency Name	Number of		Mutual or Automatic Aid Given	Total Incident Reports	Dollar Loss
		Incidents	Exposures			
Adams	Adams #1, Ritzville	0	0	0	0	\$0
	Adams #2, Lind	0	0	0	0	\$0
	Adams #4, McCall	0	0	0	0	\$0
	Adams #5, Othello	124	0	3	127	\$0
	Adams #6, Benge	0	0	0	0	\$0
	Adams #7, Washtucna	0	0	0	0	\$0
	Lind Fire Dept	0	0	0	0	\$0
	Othello Fire Dept	87	0	0	87	\$0
	Ritzville Fire Dept	0	0	0	0	\$0
	<b>Total</b>	211	0	3	214	\$0
Asotin	Asotin #1, Clarkston	174	0	14	188	\$0
	Asotin Fire Dept	5	1	11	17	\$0
	Clarkston Fire Dept	144	0	11	155	\$150
	<b>Total</b>	323	1	36	360	\$150
Benton	Benton #1 Kennewick	1,117	1	115	1,233	\$32,000
	Benton #2, Benton City	315	0	55	370	\$20,500
	Benton #3, Prosser	187	0	7	194	\$100,000
	Benton #4, West Richland	525	4	37	566	\$527,750
	Benton #5, Horse Haven	0	0	0	0	\$0
	Hanford Fire Dept	1,175	0	37	1,212	\$0
	Kennewick Fire Dept	6,536	2	96	6,634	\$1,248,425
	Prosser Fire Dept	67	0	1	68	\$0
	Richland Fire Dept	4,174	2	59	4,235	\$1,122,500
	Benton #6, Plymouth/Paterson	0	0	0	0	\$0
<b>Total</b>	14,096	9	407	14,512	\$3,051,175	
Columbia	Columbia #1, Starbuck	17	0	3	20	\$0
	Columbia #3, Dayton	82	0	3	85	\$531,000
	<b>Total</b>	99	0	6	105	\$531,000
Franklin	Connell Fire Depart	11	0	0	11	\$14,000
	Franklin #2, Kahlotus	10	0	0	10	\$116,950
	Franklin #3, Pasco	227	0	10	237	\$236,800
	Franklin #4, Basin City	0	0	0	0	\$0
	Pasco Fire Dept	446	16	7	469	\$267,950
	Franklin #1, Connell/City of Mesa	39	0	0	39	\$105,250
	<b>Total</b>	733	16	17	766	\$740,950
Garfield	Garfield #1, Pomeroy	40	0	0	40	\$0
	<b>Total</b>	40	0	0	40	\$0

## Region 8 Incident Summary

<i>County</i>	<i>Fire Agency Name</i>	<i>Number of Incidents</i>	<i>Exposures</i>	<i>Mutual or Automatic Aid Given</i>	<i>Total Incident Reports</i>	<i>Dollar Loss</i>
<b>Walla Walla</b>	College Place Fire Dept	596	0	18	614	\$60,000
	Prescott Fire Dept	0	0	0	0	\$0
	Waitsburg Fire Dept	0	0	0	0	\$0
	Walla Walla #1, Clyde	0	0	0	0	\$0
	Walla Walla #3, Eureka	0	0	0	0	\$0
	Walla Walla #4, Walla Walla	514	1	38	553	\$69,684
	Walla Walla #5, Burbank	138	0	6	144	\$0
	Walla Walla #6, Touchet	0	0	0	0	\$0
	Walla Walla #7, Prescott	0	0	0	0	\$0
	Walla Walla #8, Dixie	0	0	0	0	\$0
	Walla Walla Fire Dept	1,675	5	20	1,700	\$690,118
	Walla Walla/Columbia #2, Waitsburg	0	0	0	0	\$0
	<b>Total</b>	2,923	6	82	3,011	\$819,802
	<b>Whitman</b>	Albion Fire Dept	0	0	1	1
Colfax Fire Dept		165	0	0	165	\$1,100
Colton Fire Depart		6	0	37	43	\$95,000
LaCrosse Fire Dept		2	0	0	2	\$16,000
Malden Fire Dept		22	0	0	22	\$25,000
Pullman Fire Dept		1,253	3	236	1,492	\$401,505
Rosalia Fire Dept		3	0	0	3	\$0
Tekoa Fire Depart		9	0	0	9	\$0
Uniontown Fire Dept		0	0	0	0	\$0
WA State University		506	0	105	611	\$254,600
Whitman # 6, Endicott		0	0	0	0	\$0
Whitman #1, Tekoa		12	1	1	14	\$600,000
Whitman #12, Pullman		0	0	0	0	\$0
Whitman #14, Colton/Uniontown		37	0	1	38	\$0
Whitman #5, Lamont		15	0	0	15	\$0
Whitman #7, Rosalia		11	0	12	23	\$2,600
Whitman #2, St. John/City of St. John		17	0	0	17	\$0
Whitman #4, Palouse, City of Palouse		23	0	2	25	\$0
Whitman #8, LaCrosse/Hooper		10	0	8	18	\$8,500
Whitman #10/Oaksdale/Farmington		65	0	0	65	\$331,800
Whitman #11, Albion/Colfax/Diamond/Steptoe		57	0	1	58	\$8,050
Whitman #13, Wilcox/Onecho/Dusty		0	0	0	0	\$0
Garfield Fire Dept/Whitman #3	0	0	0	0	\$0	
<b>Total</b>	2,213	4	404	2,621	\$1,744,155	
<b>Regional Total</b>	20,638	36	955	21,629	\$6,887,232	

## Region 9

Ferry, Lincoln, Pend Oreille, Spokane, and Stevens counties are part of Region 9. In 2004, 68% of the fire agencies reported incident data to the Office of the State Fire Marshal.



### Incidents by Category

Incident Category	Number of Incidents	% of Incidents	Dollar Loss	% of Dollar Loss
Fire	2,054	5%	\$11,215,662	97%
Rescue & Emergency Medical Service	26,102	65%	\$131,100	1%
Service Calls	2,645	7%	\$83,520	1%
Hazardous Condition (No Fire)	1,551	4%	\$72,578	1%
Other Types of Incidents	2,092	5%	\$5,000	0%
Severe Weather & Natural Disaster	24	0%	\$3,000	0%
Unintentional False Protection System Activation	1,081	3%	\$2,000	0%
Overpressure, Rupture, Explosion, Overheat	74	0%	\$1,300	0%
Good Intent Calls	3,089	8%	\$0	0%
Fire Protection System Malfunction	816	2%	\$0	0%
False Alarm & False Calls	628	2%	\$0	0%
Undetermined	21	0%	\$0	0%
<b>Total</b>	<b>40,177</b>	<b>100%</b>	<b>\$11,514,160</b>	<b>100%</b>

Sorted by Dollar Loss.

Excludes mutual aid incidents.

### Fire Incidents by Category

Fire Categories	Number of Incidents	% of Incidents	Dollar Loss	% of Dollar Loss
Structures (including confined fires)	619	30%	\$9,351,296	83%
Natural Vegetation	528	26%	\$1,028,300	9%
Vehicle	345	17%	\$584,640	5%
Fixed Mobile Property	35	2%	\$162,770	1%
Fire Other	131	6%	\$67,980	1%
Cultivated Vegetation	23	1%	\$9,290	0%
Outside Rubbish	277	13%	\$8,201	0%
Outside Storage & Equipment	96	5%	\$3,185	0%
<b>Grand Total</b>	<b>2,054</b>	<b>100%</b>	<b>\$11,215,662</b>	<b>100%</b>

Sorted by Dollar Loss.

### Confined Fires

Confined Fire Category	Number of Incidents	% of Total Incidents	Dollar Loss	% of Total Dollar Loss
Cooking fire, confined to container	114	52%	\$21,540	54%
Chimney or flue fire, confined to chimney or flue	73	33%	\$16,600	42%
Fuel burner/boiler malfunction, fire confined	4	2%	\$1,500	4%
Trash or rubbish fire, contained	28	13%	\$187	0%
Commercial Compactor fire, confined to rubbish	2	1%	\$0	0%
<b>Total</b>	<b>221</b>	<b>100%</b>	<b>\$39,827</b>	<b>100%</b>

These incidents are included in the fire counts listed above. Confined fires do not require area of origin or heat sources to be documented.

## Region 9

### *Fires by: Property Use*

<i>Property Category</i>	<i>Number of Incidents</i>	<i>% of Total Incidents</i>	<i>Dollar Loss</i>	<i>% of Total Dollar Loss</i>
Residential	735	36%	\$6,250,972	56%
Mercantile and Business	58	3%	\$1,444,500	13%
Outside or Special Properties	911	44%	\$1,314,530	12%
Assembly	35	2%	\$588,200	5%
Storage	65	3%	\$551,400	5%
Manufacturing and Processing	29	1%	\$381,300	3%
Other Property Use	55	3%	\$287,075	3%
Industrial, Utility, Defense, Agriculture, Mining	84	4%	\$209,450	2%
None	22	1%	\$90,000	1%
Health Care, Detention, and Corrections	16	1%	\$74,000	1%
Undetermined	14	1%	\$22,200	0%
Educational	27	1%	\$2,035	0%
<b>Grand Total</b>	<b>2,051</b>	<b>100%</b>	<b>\$11,215,662</b>	<b>100%</b>

Sorted by dollar loss.

Property use not reported for 3 incidents.

### *Area of Origin*

<i>Area of Origin</i>	<i>Number of Incidents</i>	<i>% of Total Incidents</i>	<i>Dollar Loss</i>	<i>% of Dollar Loss</i>
Common/Functional Area	145	11%	\$4,202,670	42%
Structural Area	120	9%	\$1,573,600	16%
Undetermined	95	7%	\$787,800	8%
Storage Area	63	5%	\$744,320	7%
Service Or Equipment Area	42	3%	\$641,700	6%
Assembly Or Sales	23	2%	\$574,399	6%
Outside Area	428	34%	\$571,125	6%
Vehicle Area	310	24%	\$462,290	5%
Means of Egress	17	1%	\$259,900	3%
Technical Processing Area	4	0%	\$155,300	2%
Other Areas	22	2%	\$11,550	0%
<b>Total</b>	<b>1,269</b>	<b>100%</b>	<b>\$9,984,654</b>	<b>100%</b>

Sorted by Dollar Loss.

### *Heat Source*

<i>Heat Source Category</i>	<i>Number of Incidents</i>	<i>% of Total Incidents</i>	<i>Total Dollar Loss</i>	<i>% of Total Dollar Loss</i>
Undetermined	398	31%	\$3,931,673	39%
Operating Equipment	328	26%	\$2,629,886	26%
Hot or Smoldering Object	179	14%	\$1,458,550	15%
Candles	27	2%	\$593,955	6%
Matches & Lighters	89	7%	\$430,650	4%
Smoking Materials	69	5%	\$334,150	3%
Heat Source Other	63	5%	\$286,000	3%
Chemical or Natural	48	4%	\$150,100	2%
Flares, Fuses, & Torches	24	2%	\$88,650	1%
Multiple Heat Sources	11	1%	\$48,600	0%
Explosives & Fireworks	33	3%	\$18,740	0%
Heat from another	0	0%	\$13,700	0%
<b>Total</b>	<b>1,269</b>	<b>100%</b>	<b>\$9,984,654</b>	<b>100%</b>

Sorted by dollar loss.

Includes heat sources reported in the Fire Module.

## Region 9 Incident Summary

County	Fire Agency Name	Number of		Mutual or	Total	Dollar Loss
		Incidents	Exposures	Automatic Aid Given	Incident Reports	
Ferry	Ferry #3/Stevens #8	119	0	0	119	\$0
	Ferry/Okanogan #13, Republic	16	0	0	16	\$0
	Ferry/Okanogan #14, Curlew	14	0	0	14	\$0
	<b>Total</b>	149	0	0	149	\$0
Lincoln	Almira Fire Dept	26	0	0	26	\$153,000
	Creston Fire Dept	0	0	0	0	\$0
	Davenport Fire Dept	15	0	0	15	\$225,700
	Lincoln #1, Sprague	19	0	0	19	\$73,170
	Lincoln #3, Odessa	23	0	1	24	\$0
	Lincoln #5, Davenport	37	0	1	38	\$1,218,500
	Lincoln #6, Harrington	0	0	0	0	\$0
	Lincoln #8, Almira	16	0	1	17	\$118,000
	Lincoln #9, Grand Coulee	0	0	0	0	\$0
	Odessa Fire Dept	2	0	0	2	\$0
	Lincoln #4, Reardan/Edwall/Long Lake	114	0	10	124	\$391,000
	Lincoln #7, Wilbur/City of Wilbur	18	0	5	23	\$30,800
<b>Total</b>	270	0	18	288	\$2,210,170	
Pend Oreille	Cusick Fire Dept	0	0	0	0	\$0
	Ione Fire Dept	0	0	0	0	\$0
	Metaline Falls Fire Dept	0	0	0	0	\$0
	Metaline Fire Dept	1	0	11	12	\$0
	Newport Fire Dept	39	0	5	44	\$0
	Pend Oreille #1, Elk	0	0	0	0	\$0
	Pend Oreille #2, Metaline Falls	156	0	4	160	\$4,500
	Pend Oreille #3, Newport	86	0	12	98	\$795,900
	Pend Oreille #4, Newport	0	0	0	0	\$0
	Pend Oreille #5, Cusick	10	1	0	11	\$0
	Pend Oreille #6, Newport	0	0	0	0	\$0
	Pend Oreille #7, Fertile Valley	4	0	4	8	\$0
	Pend Oreille #8, Newport	3	1	3	7	\$0
<b>Total</b>	299	2	39	340	\$800,400	

## Region 9 Incident Summary

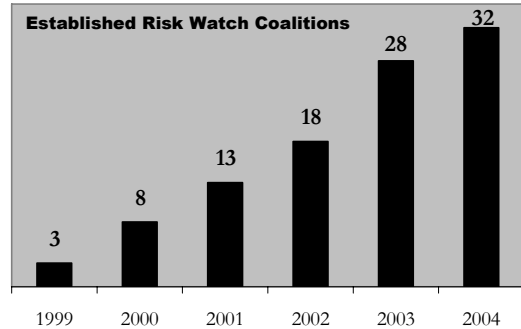
<i>County</i>	<i>Fire Agency Name</i>	<i>Number of Incidents</i>	<i>Exposures</i>	<i>Mutual or Automatic Aid Given</i>	<i>Total Incident Reports</i>	<i>Dollar Loss</i>
<i>Spokane</i>	Airway Heights Fire Dept	512	0	13	525	\$17,575
	Cheney Fire Dept	975	0	43	1,018	\$226,160
	Latah Fire Dept	0	0	0	0	\$0
	Medical Lake Fire Dept	25	0	67	92	\$0
	Millwood Fire Dept	2	0	0	2	\$1,000
	Rockford Fire Dept	2	0	0	2	\$0
	Spokane #1, Spokane Valley	8,378	0	66	8,444	\$2,282,390
	Spokane #10, Airway Heights	657	0	28	685	\$176,750
	Spokane #13, Newman Lake	42	0	4	46	\$0
	Spokane #2, Fairfield	29	0	8	37	\$0
	Spokane #3, Spokane	821	0	129	950	\$168,920
	Spokane #4, Deer Park	0	0	0	0	\$0
	Spokane #9, Mead	2,222	7	49	2,278	\$581,538
	Spokane Fire Dept	23,549	0	35	23,584	\$3,913,557
	Spokane Tribal Volunteer Fire Dept	0	0	0	0	\$0
	Waverly Fire Depart	0	0	0	0	\$0
	Spokane #5, Nine Mile Falls	63	0	16	79	\$0
	Spokane #8, Hangman/Mica/Moran/ Prairie/Ponderosa/Saltese/Valleyford	966	0	63	1,029	\$379,000
	Spokane #11, Rockford	12	0	5	17	\$150,000
	Spokane #12, Latah/Waverly	0	0	0	0	\$0
	<b><i>Total</i></b>	38,255	7	526	38,788	\$7,896,890
<i>Stevens</i>	Chewelah Fire Dept	59	0	4	63	\$40,500
	Colville Fire Dept	0	0	0	0	\$0
	Marcus Fire Dept	0	0	0	0	\$0
	Northport Fire Dept	0	0	0	0	\$0
	Stevens # 11, Northport	20	0	1	21	\$0
	Stevens #5, Addy	67	0	8	75	\$146,550
	Stevens #7, Arden	52	0	8	60	\$346,400
	Stevens #1, Clayton	887	0	8	895	\$0
	Stevens #10, Deep Lake	0	0	0	0	\$0
	Stevens #2, Hunters	25	0	1	26	\$13,750
	Stevens #3, Colville	0	0	0	0	\$0
	Stevens #4, Valley/Chewelah	31	0	3	34	\$2,000
	Stevens #9, Little Pend Oreille Lakes	0	0	0	0	\$0
	Stevens #12, Rice/Daisy/Gifford	23	0	0	23	\$43,000
	Kettle Falls Fire Dept/Stevens #6	40	0	3	43	\$14,500
		<b><i>Total</i></b>	1,204	0	36	1,240
<b><i>Grand Total</i></b>		40,177	9	619	40,805	\$11,514,160

## Risk Watch in Washington

The Washington Risk Watch Management Team is comprised of representative from the following agencies and organizations:

- Department of Health
- Office of the State Fire Marshal
- Office of Superintendent of Public Instruction
- Public Fire Educators
- Association of Sheriffs and Police Chiefs

The team provides support to community-based Risk Watch Coalitions that provide safety education within local communities. Risk Watch is an all-risk curriculum targeting children in preschool through eight grade. Risk Watch Coalitions have been established in 32 communities in Washington State. In 2004, more than 20,000 students were provided with safety information.



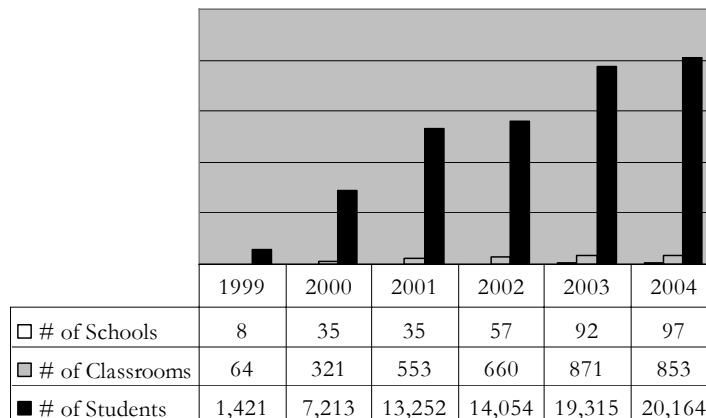
## 2004 Accomplishments

**Workshops** Two workshops were held; one in spring and one in fall. The Spring Workshop was at East Wenatchee Fire Department and included presentations on *The Consequences of Unintentional Injuries* and *Implementing Risk Watch in a Rural Community*. Coalitions received Risky Business Kits. The fall workshop was held at the Lakewood Fire Department and focused on Fire and Burn Prevention as well as Pedestrian and Bike Safety. Coalitions received children’s books relating to these topics. The Department of Health provided funding for both the fall and spring workshops. Safeco Insurance sponsored the spring workshop by providing children’s books. The National Fire Protection Association (NFPA) sponsored the fall workshop by providing Risky Business Kits.

**Newsletters** Two newsletters were distributed to the membership, one in spring and one in fall. The newsletters focused on announcing upcoming workshops and offering resources for coalitions, teachers and families.

**Safety Education Books** With funding provided by Safeco Insurance, three children’s books were distributed to 70 Risk Watch Coalitions for use in school libraries. These books included: *Franklin’s Bicycle Helmet*, *Arthur’s Fire Drill*, and *No Dragons for Tea*. Each book included a sticker acknowledging that the book was donated by the Washington State Risk Watch Program and Safeco Insurance.

**Smoke Alarms** Washington State received 1,400 smoke alarms from the NFPA to be installed in *Risk Watch* communities. The alarms were distributed to participating Risk Watch Coalitions in 14 communities.



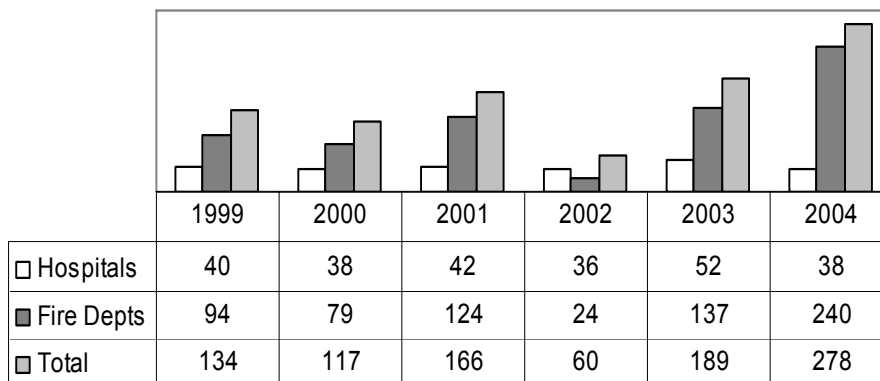
## Fireworks

The Office of the State Fire Marshal collects information on firework-related incidents and injuries. Fire agencies and hospitals voluntarily report using paper forms or by completing an NFIRS incident report.

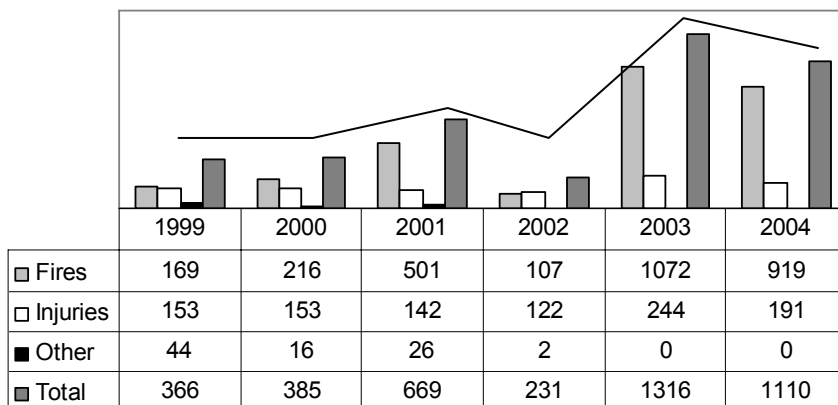


There were 1,110 fireworks-related injuries and/or fires reported to the Office of the State Fire Marshal in 2004 by fire departments and hospital emergency rooms. This is a 16% reduction from the previous year's total of 1,316, but a 49% increase over the five year average of 742. Of the reported incidents, there were 919 fires and 191 injuries. These incidents resulted in nearly \$1 million in property loss. Of the 536 fire departments in Washington, 80 fire departments reported having no fireworks-related incidents.

### Agencies Reporting



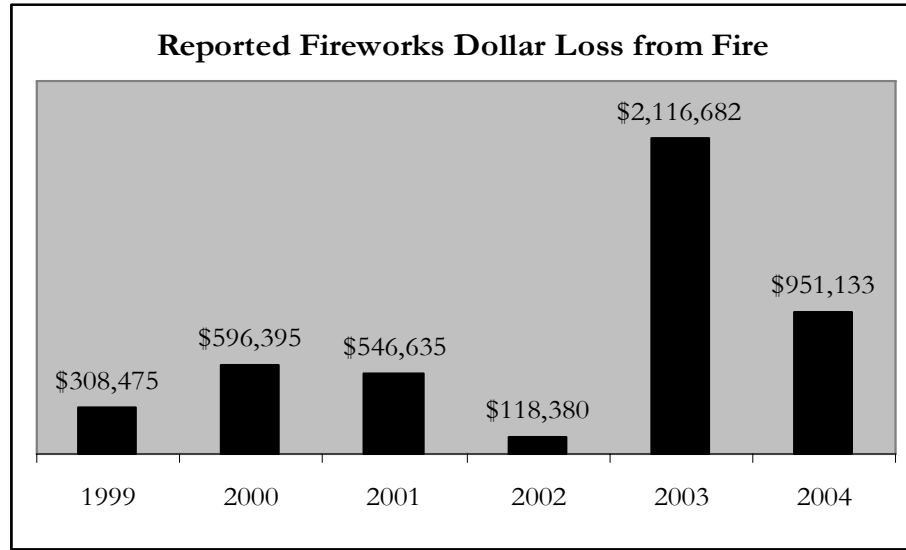
### Six Year Incident Trend





## Fireworks

Fireworks-related fires caused an estimated loss of \$951,133. Based on the reports received, illegal fireworks were identified as the cause in 19% of all reported firework-related fires and caused \$336,073 in property loss, or 35% of the estimated total loss from fireworks-related fires. Legal fireworks were identified in 51% of the reported fires, with a loss of \$481,951. The type of fireworks was not identified by the reporting fire department in 60% of the fire incidents. (Table #1).

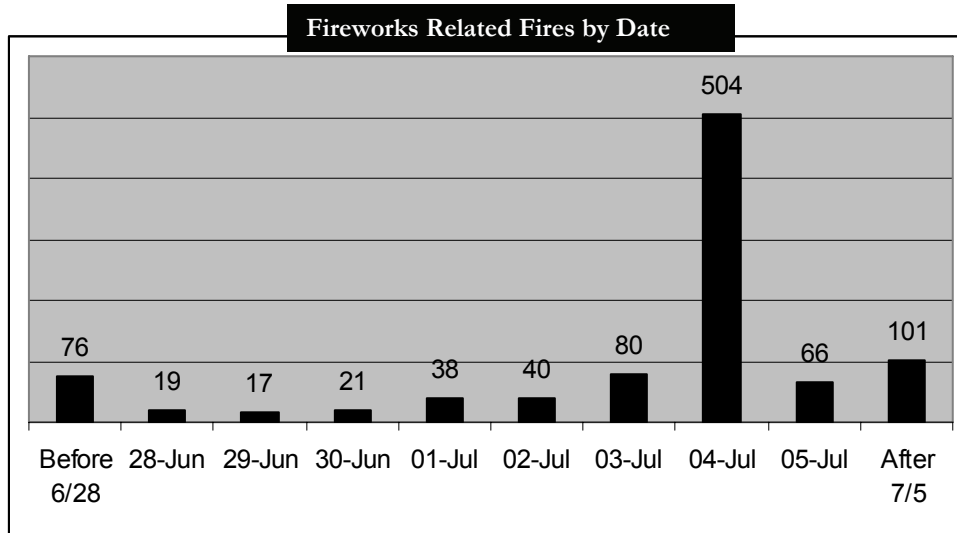


Wildland areas are at great risk from fires caused by fireworks. Of the fire incidents reported, 68% resulted in vegetation or wildland fires, with a fire loss of \$296,258, 7% were residential with a fire loss of \$638,650 and 2% were vehicle fires with a fire loss of \$15,000 (Table #1).

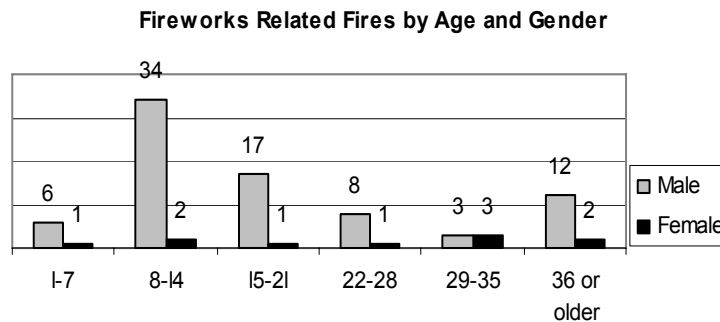
Property Type Table #1	Dollar Loss by Classification of Fireworks Device				Number of Fires by Classification of Device			
	Legal	Illegal	Unidentified	Total	State Legal	State Illegal	Unknown	Total
Vegetation/Wildland	\$278,575	\$8,973	\$8,710	\$296,258	108	140	500	748
Residential	\$195,650	\$321,600	\$121,400	\$638,650	11	18	50	79
Commercial	\$225	\$500	0	\$725	7	3	12	22
Vehicle	\$7,500	\$4,500	\$3,000	\$15,000	5	9	9	23
Other/Unknown	0	\$500	0	\$500	7	10	30	47
<b>Totals</b>	<b>\$481,950</b>	<b>\$336,073</b>	<b>\$133,110</b>	<b>\$951,133</b>	<b>138</b>	<b>180</b>	<b>601</b>	<b>919</b>

## Fireworks

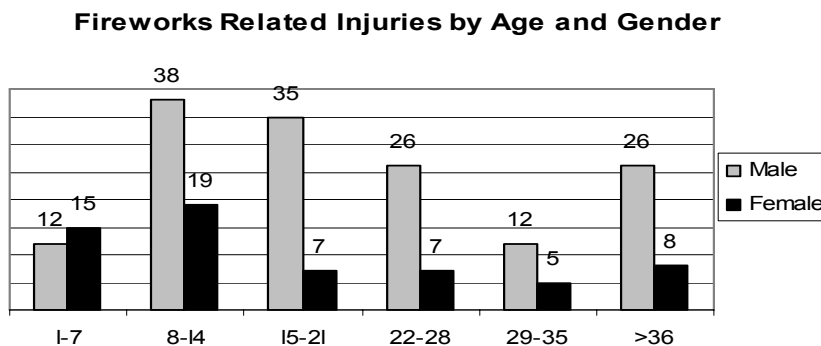
Firework-related incidents most often occur on the date that they are most widely used, July 4. This has remained constant over the past five years.



Fireworks-related fires show that young males are causing 89% of the fireworks-related fires.



Fireworks-related injuries show that male youth and young adults are most often injured in fireworks-related injury incidents. In 12% of these incidents, there was no adult supervision. According to the Center for Disease Control, children are 11 times more likely to be injured by fireworks if they are unsupervised.



## Fireworks

The type of injury caused most often was burns at 58%. The next leading injury was trauma at 30%, followed by amputations at less than 1%. When discharging fireworks a first aid kit should be on hand.

Legal Classification of Firework Table #2									
Type of Injury					Injury Location				
	<i>Illegal</i>	<i>Legal</i>	<i>Unk</i>	<i>Total</i>	<i>Body Part</i>	<i>Legal</i>	<i>Illegal</i>	<i>Unk</i>	<i>Total</i>
Trauma	27	12	17	56	Head	30	33	0	63
First Degree Burn	10	21	20	51	Hand	16	17	0	33
Second Degree Burn	16	19	14	49	Arm	3	9	0	12
Not Marked	12	3	8	23	Leg	7	6	0	13
Third Degree Burn	2	5	3	10	Torso	4	4	0	8
Amputation	1		1	2	Unknown	0	0	62	62
<b>Total</b>	<b>68</b>	<b>60</b>	<b>63</b>	<b>191</b>	<b>Totals</b>	<b>60</b>	<b>69</b>	<b>62</b>	<b>191</b>

Table #3 shows the type of fireworks devices that were involved in injury incidents. Illegal fireworks were the cause of 61 incidents (35%) and legal fireworks were also responsible for 61 incidents (35%). Of the 61 incidents involving legal devices, roman candles caused 17 (28%) of the incidents followed by sparklers at 14 (23%), and third is multi aerials at 13 (21%) of the incidents. The remaining miscellaneous fireworks caused 17 (28%) of the incidents. Bottle rockets and firecrackers lead the list of illegal devices causing injuries.

Table #3 Injury by Type of Device			
Legal	# of Incidents	Illegal	# of Incidents
Roman Candle	17	Bottle rocket	13
Sparkler	14	Firecracker	12
Multi Aerial	13	Missiles/Rocket	11
Smoke bomb	7	Homemade Explosive Device	8
Cone Fountain	7	Public Display Mortars	7
Ground Bloom Flower	2	M80	4
Novelties	1	Altered Fireworks	3
Helicopter	0	Tennis Ball	1
Wheel	0	M-100's or larger	1
<b>Total Legal Devices</b>	<b>61</b>	Pipe Bomb	1
		<b>Total Illegal Devices</b>	<b>61</b>
		<b>Unknown Device Type</b>	<b>69</b>
		<b>Total - All Devices</b>	<b>191</b>

Table #4 Cause of Injury	
Cause	# of Injuries
Holding	29
Leaning	13
Delayed Ignition	12
Altered/Tampering	11
Surface	9
Throwing	6
Other/unknown	111
<b>Total</b>	<b>191</b>

As shown in Table #4, the leading cause of fireworks related injuries is “holding” at 29 incidents, followed by “leaning” at 13 incidents, and “delayed ignition” at 12 incidents.

### Education and Enforcement Make a Difference

## Fireworks

### Fireworks Incident Reports Received by County

County	Fire Agencies	Fire Dept.		Total	Fire District		Total	Hospital	Grand Total
	No Incidents	Fire	Injury		Fire	Injury		Injury	
Adams	1	3	0	3	4	0	4	0	7
Benton	3	17	0	17	0	0	0	0	17
Chelan	0	7	0	7	2	0	2	5	14
Clallam	1	2	0	2	0	0	0	6	8
Clark	0	47	3	50	10	0	10	2	62
Columbia	0	0	0	0	0	0	0	1	1
Cowlitz	1	4	1	5	13	1	14	3	22
Douglas	2	0	0	0	4	0	4	0	4
Franklin	1	0	0	0	0	0	0	0	0
Garfield	0	1	0	1	0	0	0	0	1
Grant	3	16	1	17	10	0	10	2	29
Grays Harbor	4	7	5	12	1	1	2	12	26
Island	2	6	0	6	2	0	2	2	10
Jefferson	1	1	0	1	1	1	2	0	3
King	4	245	3	248	99	2	101	33	382
Kitsap	0	16	4	20	34	3	37	0	57
Kittitas	4	1	0	1	2	0	2	0	3
Klickitat	2	3	0	3	1	0	1	0	4
Lewis	2	1	0	1	2	2	4	2	7
Lincoln	4	4	0	4	0	0	0	0	4
Mason	0	3	0	3	7	1	8	5	16
Okanogan	4	6	0	6	7	0	7	0	13
Pacific	1	1	0	1	1	1	2	2	5
Pend Oreille	4	0	0	0	0	0	0	0	0
Pierce	7	16	0	16	57	0	57	8	81
San Juan	0	1	0	1	1	0	1	0	2
Skagit	4	20	0	20	1	0	1	9	30
Snohomish	14	29	0	29	30	2	32	31	92
Spokane	0	16	1	17	4	0	4	8	29
Stevens	0	1	0	1	7	0	7	1	9
Thurston	1	6	2	8	16	2	18	4	30
Wahkiakum	0	0	0	0	0	0	0	1	1
Walla Walla	2	1	0	1	7	0	7	2	10
Whatcom	0	3	0	3	20	0	20	11	34
Whitman	3	2	0	2	0	0	0	2	4
Yakima	5	32	0	32	57	1	58	3	93
Grand Total	80	518	20	538	400	17	417	155	1110

## Fireworks

In an effort to reduce fireworks-related losses, the City of Kent Fire and Police Departments, designed a campaign where education and enforcement proved to be a winning combination.

Components of the campaign included:

- Combined police and fire emphasis patrols 6/28-7/4
- A voluntary amnesty program with a drop off for illegal fireworks
- Multi-lingual signage and flyers
- Media releases and media events
- A letter to all residents, flyer to schools



State Illegal fireworks collected by the Kent amnesty program.

The campaign resulted in a significant reduction in fire loss and a reduction in response by emergency services.



Everyone that discharges fireworks should be aware of the following safety precautions:

- Only adults should light fireworks.
- Use legal fireworks, available at licensed outlets.
- Do not throw fireworks or hold in your hand.
- Protect your eyes.
- Keep matches and lighters away from children.
- Never relight a dud.
- Always keep water handy.

The safest way to prevent firework related injuries is to leave fireworks displays to trained professionals.<sup>1</sup> Their shows are spectacular but safe. There are over 100 professional displays on July 4 in Washington State as well as other Independence Day activities.

<sup>1</sup> National Fire Protection Association, Fireworks are Too Risky, NFPA Position Paper, On Line at <http://www.nfpa.org/Research/NFPAFactSheets/Fireworks/Risky/risky.asp>; printed 11/24/2003

## Firesetting Intervention

In Washington State, 13 of 39 counties are currently providing intervention services to juvenile firesetters. Some counties provide this service through formal multidisciplinary committees, work groups, or service delivery processes. These counties serve hundreds of children annually in an effort to elimination inappropriate firesetting behavior.

In the last five years, children with access to ignition devices have caused nine fire fatalities. In these fires, often the child that started the fire died along with another family member.

<i>Juveniles and Fire Fatalities<sup>2</sup></i>	<i>2000</i>	<i>2001</i>	<i>2002</i>	<i>2003</i>	<i>2004</i>	<i>5-Yr Total</i>
Children with Access to Ignition Devices	2	0	7	0	0	9
Estimated Fire Loss at those fires	\$85,000	0	\$170,000	0	0	255,000

The table below represents elementary, junior high/middle school, and high school fires as reported by local fire jurisdictions to the NFIRS 5.0. There were 344 school fires in 2004, 5% less than 2003. Threat assessment teams and school resource officers should be trained to better identify, refer and monitor the treatment of youths engaged in firesetting behavior. All schools should have policies that prohibit youth from carrying lighters or matches on campus.

<i>School Fires<sup>3</sup></i>	<i>2000</i>	<i>2001</i>	<i>2002</i>	<i>2003</i>	<i>2004</i>	<i>5-Yr Total</i>
Fire Incidents on Schools Properties	19	158	232	362	344	1,115
Dollar Loss on School Properties	\$715	\$592,443	\$15,136,490	\$824,532	\$174,398	\$16,728,578
Fire Incidents in Schools—Leading Ignition Source	Smoking Material	Match	Cig. Lighter	Match	Match	Match
Intentional Fire Incidents in Schools	3	46	41	52	65	207
Intentional School Fires – Fire Loss	\$100	\$191,971	\$15,023,106	\$52,522	16,811	\$15,284,510

Department of Natural Resource (DNR) reports that over the last five years, 183 wildland fires were set by juveniles resulting in \$128,673.92 in loss. Most wildfires burn in the state's most populated areas. Over 85% of all fires that occurred on DNR protected lands were caused by people. Early assessment and intervention for kids that set fires is critical. Families need to be informed about age-appropriate supervision and fire safety.

<i>Wildland Fires<sup>4</sup></i>	<i>2000</i>	<i>2001</i>	<i>2002</i>	<i>2003</i>	<i>2004</i>	<i>5-Yr Total</i>
<i>WA Dept. of Natural Resources</i>						
Fires Set By Juveniles	27	26	43	54	33	183
Dollar Loss	\$67,937.92	\$60,736.00	35 acres	32 acres	42 acres	-----

<sup>2</sup> Washington State Patrol, Office of the State Fire Marshal, Fire Fatality Report for 2004

<sup>3</sup> Washington State Fire Department Incident Data for 2004– National Fire Incident Reporting System

<sup>4</sup> Washington State Department of Natural Resources

## Special Recognition

**Washington State Association of Fire Chiefs** for demonstrating their support toward data collection.

### **Publication and Design**

Dan Johnson, Chief Deputy State Fire Marshal  
Melissa Gannie, Deputy State Fire Marshal  
Karen Jones, Deputy State Fire Marshal  
Kathy Ritter, Program Support

### **Photography**

Weldon Wilson

### **Data Collection**

Special Thanks to the 401 fire agencies submitting NFIRS 5.0 data  
Melissa Gannie, Deputy State Fire Marshal  
Karen Jones, Deputy State Fire Marshal  
Kathy Ritter, Program Support